

ATF-100-4.1

100 TON MAX. LIFTING CAPACITY

EU STAGE V

ALL TERRAIN CRANE



Tadano ATF100-4.1

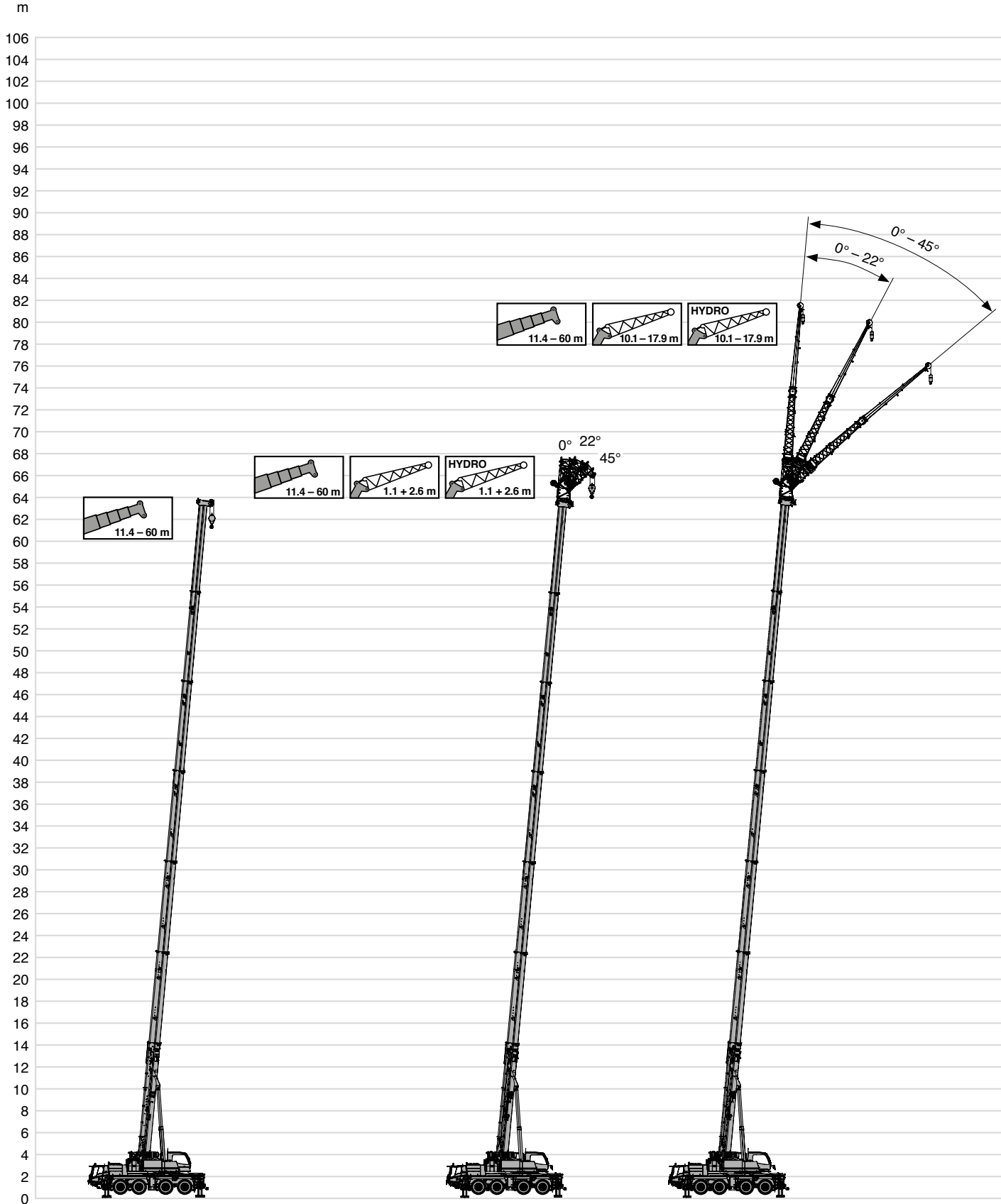
J&M Crane & Transport Ltd
24 Hour Crane & Transport Services

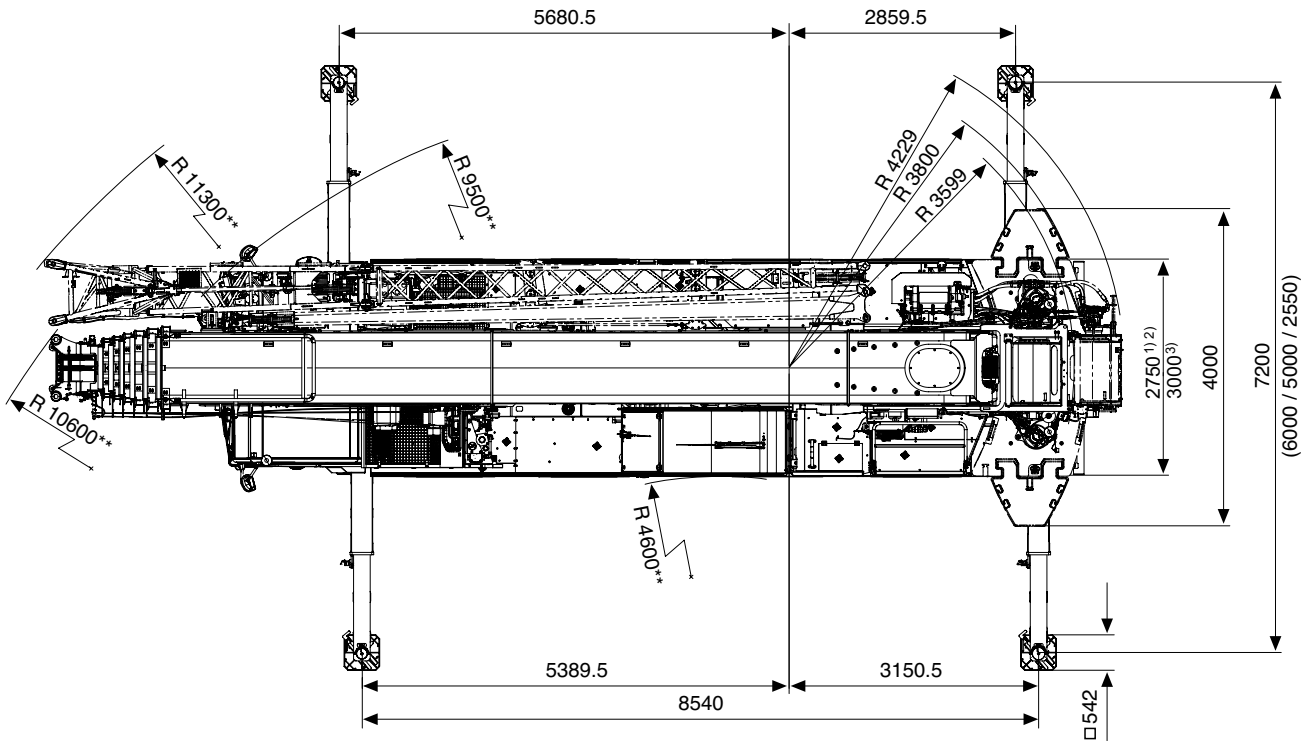
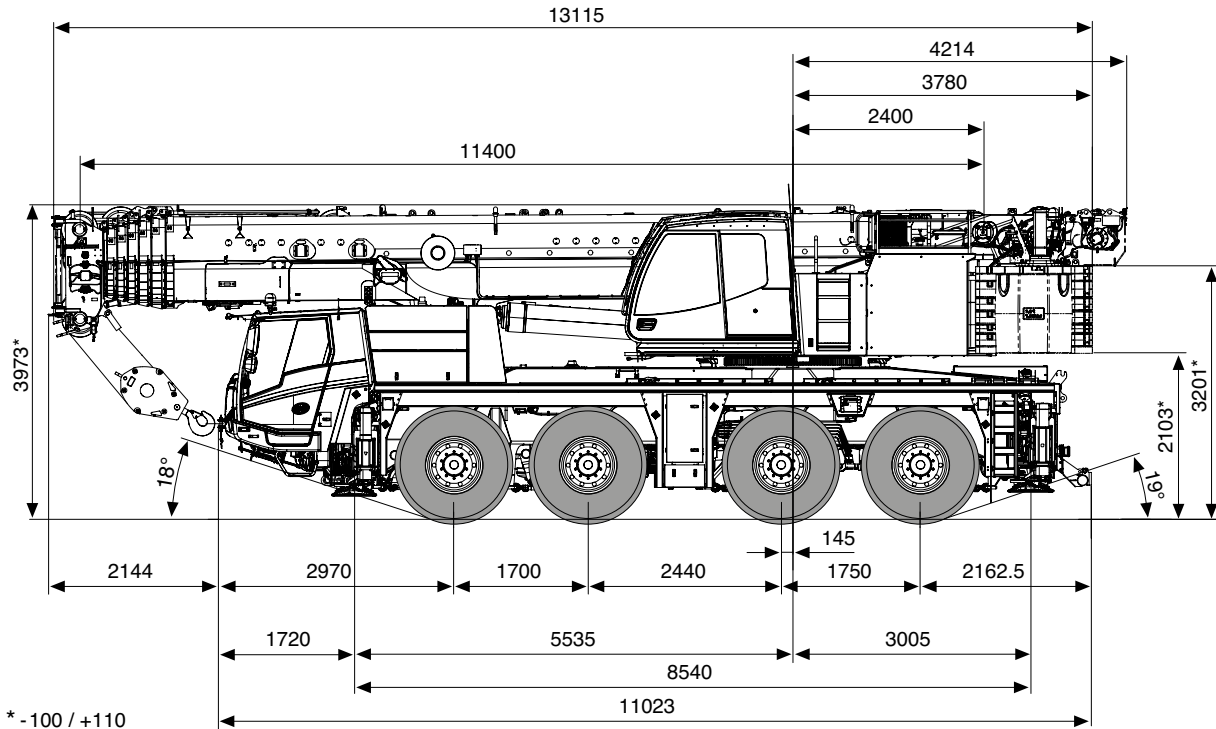
Mobile Cranes - Contract Lifting - Plant Movement - Abnormal Loads - Lorry Loaders

0845 279 4877 | www.jandmcranehire.co.uk | info@jandmcranehire.co.uk

Mobile Cranes - Contract Lifting - Plant Movement - Abnormal Loads - Lorry Loaders

0845 279 4877 | www.jandmcranehire.co.uk | info@jandmcranehire.co.uk



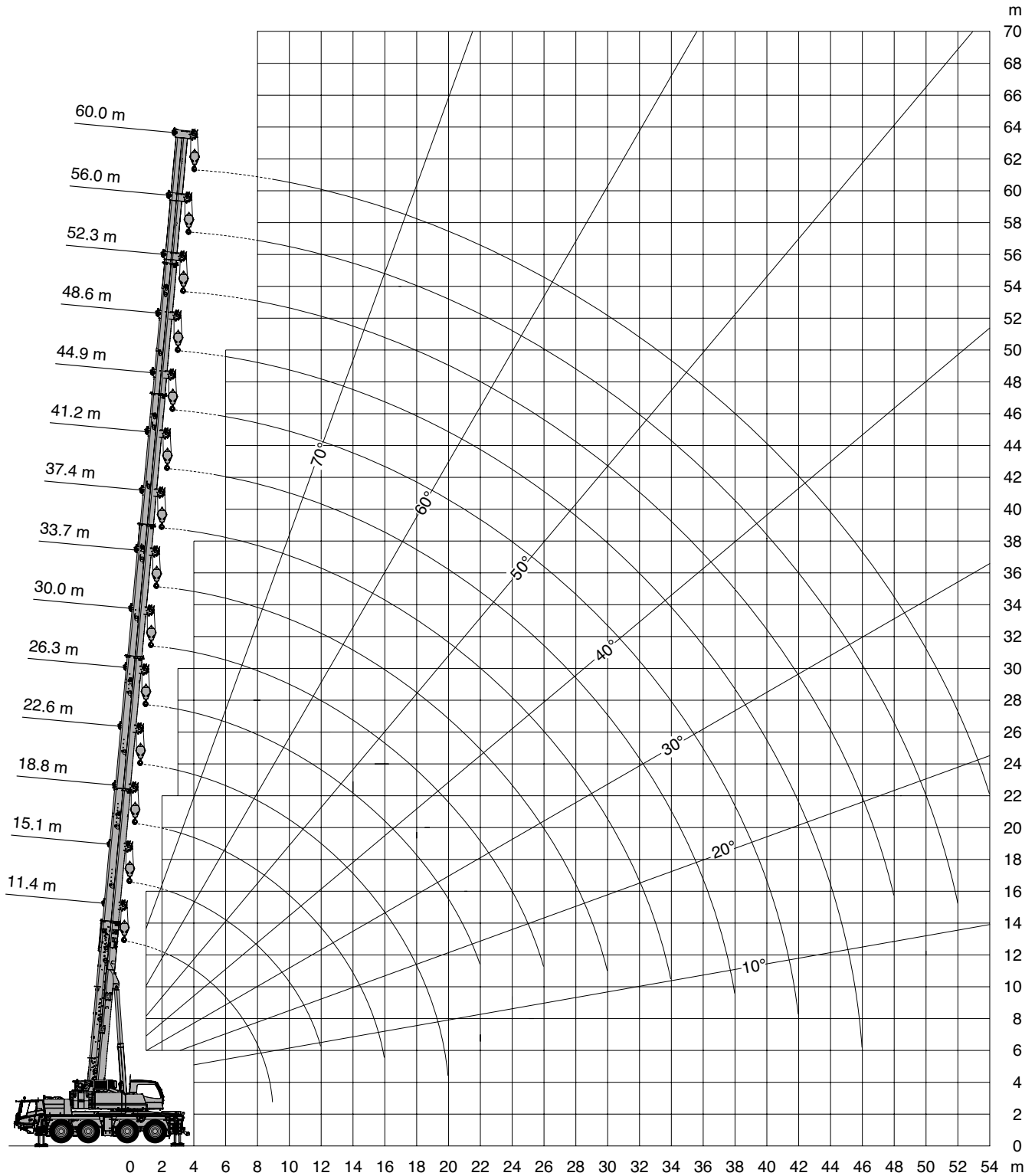


1) 385/95 R 25 (14.00 R 25)
 2) 445/95 R 25 (16.00 R 25)
 3) 525/80 R 25 (20.5 R 25)

** Minimum · minimum · mínimo · miníto · мінімальны

Mobile Cranes - Contract Lifting - Plant Movement - Abnormal Loads - Lorry Loaders

0845 279 4877 | www.jandmcranehire.co.uk | info@jandmcranehire.co.uk





	11.4 m*	11.4 m	15.1 m	18.8 m	22.6 m	26.3 m	30.0 m	33.7 m	37.4 m	41.2 m	44.9 m	48.6 m	52.3 m	56.0 m	60.0 m
2.5	100.0**	82.7	63.5	63.5	59.7	46.3	36.9								
3.0	89.7	74.8	63.5	63.5	59.7	46.3	36.9	29.3							
3.5	84.4	68.2	63.5	63.5	59.7	46.3	36.9	29.3	23.7						
4.0	79.6	62.4	62.1	61.8	59.6	46.3	36.9	29.3	23.8						
4.5	72.4	57.5	57.5	57.4	57.0	46.3	36.9	29.3	23.8	19.1					
5.0	64.8	53.2	53.2	53.6	53.4	46.3	36.9	29.3	23.8	19.1	15.9				
6.0	53.3	46.0	46.0	46.4	46.2	45.2	36.9	29.3	23.8	19.1	16.0	12.5			
7.0	45.1	40.3	40.3	40.7	40.5	40.2	34.6	29.3	23.8	19.1	16.0	12.5	10.3		
8.0	38.8	35.7	35.7	36.6	36.6	36.4	34.4	28.6	23.8	19.1	16.0	12.5	10.3	8.4	
9.0	34.0	31.9	31.9	32.8	32.8	32.6	32.2	27.7	23.7	19.1	16.0	12.5	10.3	8.4	7.3
10.0			28.7	29.7	29.6	29.4	29.0	27.5	22.7	19.1	16.0	12.5	10.3	8.4	7.3
11.0			26.0	26.9	26.9	26.6	26.2	26.1	21.9	19.1	16.0	12.5	10.3	8.4	7.3
12.0			24.1	24.4	24.4	24.1	23.7	24.0	21.9	18.2	16.0	12.5	10.3	8.4	7.3
14.0				20.4	20.4	20.1	20.6	19.7	19.0	17.7	15.0	12.5	10.3	8.4	7.3
16.0				16.7	16.6	17.3	16.9	16.5	15.9	15.5	14.6	12.3	10.3	8.4	7.3
18.0					14.5	14.4	14.0	14.0	13.6	13.2	13.3	11.3	10.3	8.4	7.3
20.0					12.4	12.2	11.9	11.8	11.4	11.9	11.5	11.2	9.6	8.4	7.3
22.0						10.4	10.1	10.3	10.5	10.4	9.9	9.9	9.2	8.4	7.3
24.0							8.7	9.2	9.1	9.0	8.8	8.7	8.8	7.8	7.2
26.0							7.6	8.0	8.0	7.8	8.0	7.9	7.6	7.2	6.8
28.0								7.0	7.0	7.1	7.2	6.9	6.6	6.2	6.2
30.0								6.2	6.2	6.5	6.3	6.0	5.8	5.4	5.4
32.0									5.5	5.8	5.6	5.3	5.1	4.7	4.7
34.0									4.9	5.1	5.0	4.7	4.4	4.1	4.0
36.0										4.6	4.4	4.1	3.9	3.5	3.5
38.0										4.1	4.0	3.7	3.4	3.0	3.0
40.0											3.5	3.2	3.0	2.6	2.6
42.0											3.2	2.8	2.6	2.2	2.2
44.0												2.5	2.2	1.9	1.8
46.0												2.2	1.9	1.6	1.5
48.0													1.7	1.3	1.2
50.0														1.0	1.0
52.0														0.8	0.8
54.0															0.5

* Over rear · Nach hinten · A l'arrière · Hacia atrás · Indietro · Назад

** With additional lifting equipment · Mit Zusatzhubausrüstung · Avec équipement de levage supplémentaire

Con equipamiento de elevación adicional · Con attrezzaggio di sollevamento supplementare · С дополнительным подъемным оборудованием



Crane Height (m)	11.4 m*	11.4 m	15.1 m	18.8 m	22.6 m	26.3 m	30.0 m	33.7 m	37.4 m	41.2 m	44.9 m	48.6 m	52.3 m	56.0 m	60.0 m
2.5	97.6	82.5	63.5	63.5	59.7	46.3	36.9								
3.0	91.5	74.5	63.5	63.5	59.7	46.3	36.9	29.3							
3.5	86.1	67.8	63.5	63.5	59.7	46.3	36.9	29.3	23.7						
4.0	78.5	62.0	61.7	61.4	59.6	46.3	36.9	29.3	23.8						
4.5	69.4	57.0	57.1	57.0	56.5	46.3	36.9	29.3	23.8	19.1					
5.0	62.0	52.7	52.7	53.1	52.9	46.3	36.9	29.3	23.8	19.1	15.9				
6.0	51.0	45.5	45.5	45.9	45.7	45.0	36.9	29.3	23.8	19.1	16.0	12.5			
7.0	43.1	39.8	39.8	40.2	40.0	39.7	34.6	29.3	23.8	19.1	16.0	12.5	10.3		
8.0	37.1	35.2	35.1	36.1	36.1	35.9	34.4	28.6	23.8	19.1	16.0	12.5	10.3	8.4	
9.0	32.5	31.2	31.1	32.2	32.2	32.0	30.3	27.7	23.7	19.1	16.0	12.5	10.3	8.4	7.3
10.0			27.7	28.8	28.8	28.2	26.5	26.3	22.7	19.1	16.0	12.5	10.3	8.4	7.3
11.0			25.5	25.9	25.9	24.9	24.7	23.3	21.9	19.1	16.0	12.5	10.3	8.4	7.3
12.0			22.4	22.9	22.9	22.1	22.1	21.0	20.0	18.2	16.0	12.5	10.3	8.4	7.3
14.0				17.8	17.9	18.5	18.1	17.5	16.6	15.9	15.0	12.5	10.3	8.4	7.3
16.0				14.3	15.0	14.9	14.6	14.5	13.9	14.0	13.3	12.3	10.3	8.4	7.3
18.0					12.4	12.2	12.0	12.1	12.3	12.1	11.7	11.1	10.3	8.4	7.3
20.0					10.5	10.3	10.0	10.4	10.4	10.3	10.0	10.0	9.2	8.4	7.3
22.0						8.8	8.8	8.9	8.9	8.7	9.1	8.8	8.4	7.8	7.3
24.0							7.8	7.6	7.6	8.0	7.8	7.5	7.3	6.7	6.6
26.0							6.8	6.6	6.6	6.9	6.8	6.5	6.2	5.8	5.7
28.0								6.1	5.7	6.1	5.9	5.6	5.4	5.0	4.9
30.0								5.6	5.0	5.3	5.2	4.9	4.7	4.3	4.3
32.0									4.4	4.7	4.6	4.3	4.0	3.6	3.6
34.0									3.9	4.1	4.0	3.7	3.5	3.1	3.1
36.0										3.7	3.5	3.2	3.0	2.6	2.6
38.0										3.3	3.1	2.8	2.5	2.2	2.1
40.0											2.7	2.4	2.2	1.8	1.8
42.0												2.4	2.1	1.8	1.4
44.0													1.8	1.5	1.1
46.0													1.5	1.2	0.9
48.0														1.0	0.6



Crane Height (m)	11.4 m*	11.4 m	15.1 m	18.8 m	22.6 m	26.3 m	30.0 m	33.7 m	37.4 m	41.2 m	44.9 m	48.6 m	52.3 m	56.0 m	60.0 m
2.5	98.0	82.3	63.5	63.5	59.7	46.3	36.9								
3.0	91.9	74.4	63.5	63.5	59.7	46.3	36.9	29.3							
3.5	86.5	67.6	63.5	63.5	59.7	46.3	36.9	29.3	23.7						
4.0	77.5	61.9	61.5	61.3	59.6	46.3	36.9	29.3	23.8						
4.5	68.5	56.9	56.9	56.8	56.4	46.3	36.9	29.3	23.8	19.1					
5.0	61.2	52.5	52.5	52.9	52.7	46.3	36.9	29.3	23.8	19.1	15.9				
6.0	50.3	45.3	45.3	45.7	45.5	44.8	36.9	29.3	23.8	19.1	16.0	12.5			
7.0	42.5	39.6	39.6	40.0	39.8	39.7	34.6	29.3	23.8	19.1	16.0	12.5	10.3		
8.0	36.6	35.0	35.0	36.0	35.9	35.7	33.9	28.6	23.8	19.1	16.0	12.5	10.3	8.4	
9.0	32.0	30.8	30.8	31.9	31.9	31.1	29.1	27.7	23.7	19.1	16.0	12.5	10.3	8.4	7.3
10.0			27.7	28.4	28.4	27.1	26.2	25.2	22.7	19.1	16.0	12.5	10.3	8.4	7.3
11.0			24.9	25.4	25.2	23.8	23.7	22.5	21.4	19.1	16.0	12.5	10.3	8.4	7.3
12.0			21.5	22.0	22.0	21.9	21.2	20.5	19.3	18.1	16.0	12.5	10.3	8.4	7.3
14.0				17.0	17.8	17.6	17.2	16.8	15.9	15.7	14.6	12.5	10.3	8.4	7.3
16.0				14.1	14.3	14.1	13.8	14.0	13.4	13.4	12.7	11.9	10.3	8.4	7.3
18.0					11.8	11.7	11.3	11.5	11.8	11.7	11.1	10.6	9.9	8.4	7.3
20.0					9.9	9.8	9.6	9.9	9.9	9.7	9.8	9.7	9.2	8.4	7.3
22.0						8.3	8.6	8.4	8.4	8.7	8.6	8.3	7.9	7.3	7.2
24.0							7.4	7.2	7.2	7.5	7.4	7.1	6.8	6.3	6.2
26.0							6.4	6.5	6.2	6.5	6.4	6.1	5.8	5.5	5.3
28.0								5.9	5.4	5.7	5.5	5.3	5.0	4.6	4.6
30.0								5.2	4.7	5.0	4.8	4.5	4.3	4.0	3.9
32.0									4.1	4.4	4.2	3.9	3.7	3.4	3.3
34.0									3.6	3.9	3.7	3.4	3.2	2.8	2.8
36.0										3.4	3.3	3.0	2.7	2.3	2.3
38.0										3.0	2.9	2.5	2.3	1.9	1.9
40.0											2.5	2.2	1.9	1.6	1.5
42.0												2.2	1.8	1.2	1.2
44.0													1.6	1.3	0.9
46.0													1.3	1.0	0.7
48.0														0.8	0.6

* Over rear · Nach hinten · A l'arrière · Hacia atrás · Indietro · Hazað

Mobile Cranes - Contract Lifting - Plant Movement - Abnormal Loads - Lorry Loaders

0845 279 4877 | www.jandmcranehire.co.uk | info@jandmcranehire.co.uk

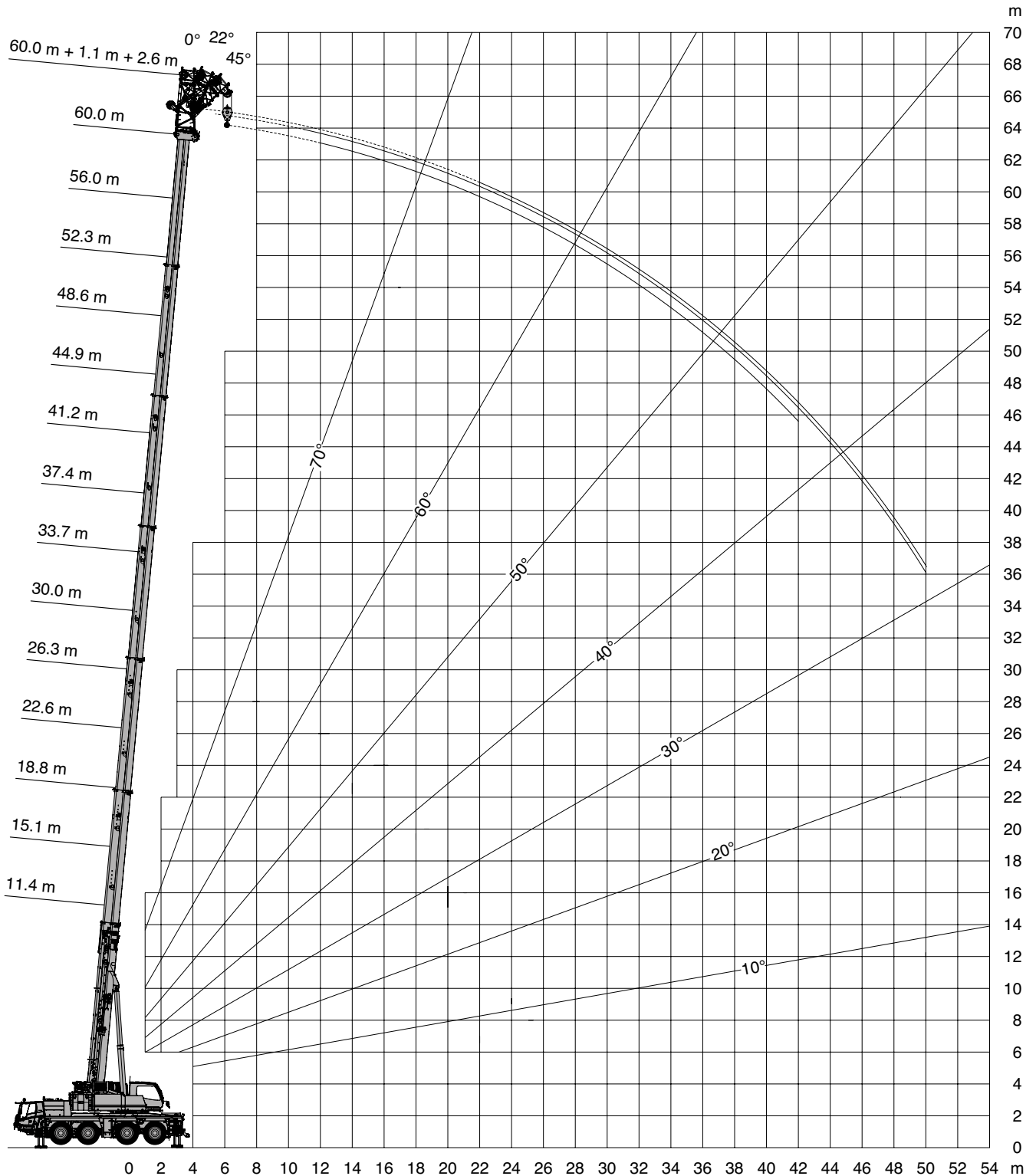
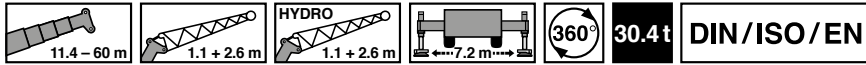


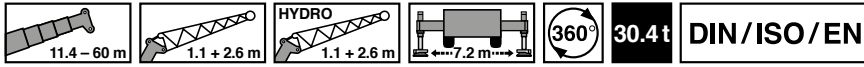
Crane Height (m)	11.4 m*	11.4 m	15.1 m	18.8 m	22.6 m	26.3 m	30.0 m	33.7 m	37.4 m	41.2 m	44.9 m	48.6 m	52.3 m	56.0 m	60.0 m
2.5	98.7	82.1	63.5	63.5	59.7	46.3	36.9								
3.0	92.5	74.1	63.5	63.5	59.7	46.3	36.9	29.3							
3.5	87.0	67.4	63.5	63.5	59.7	46.3	36.9	29.3	23.7						
4.0	76.1	61.6	61.3	61.0	59.6	46.3	36.9	29.3	23.8						
4.5	67.3	56.6	56.6	56.6	56.1	46.3	36.9	29.3	23.8	19.1					
5.0	60.2	52.3	52.3	52.7	52.5	46.3	36.9	29.3	23.8	19.1	15.9				
6.0	49.4	45.0	45.0	45.4	45.2	44.6	36.9	29.3	23.8	19.1	16.0	12.5			
7.0	41.7	39.3	39.3	39.7	39.7	39.7	34.6	29.3	23.8	19.1	16.0	12.5	10.3		
8.0	35.9	34.5	34.4	35.6	35.5	34.3	32.0	28.6	23.8	19.1	16.0	12.5	10.3	8.4	
9.0	31.4	30.3	30.3	31.4	31.1	29.3	27.7	26.3	23.7	19.1	16.0	12.5	10.3	8.4	7.3
10.0			27.6	28.0	27.0	25.5	25.3	23.9	22.2	19.1	16.0	12.5	10.3	8.4	7.3
11.0			23.4	24.0	23.7	23.2	22.4	21.6	20.5	18.9	16.0	12.5	10.3	8.4	7.3
12.0			20.1	20.6	20.6	21.1	20.0	19.3	18.3	17.5	16.0	12.5	10.3	8.4	7.3
14.0				15.8	16.6	16.5	16.2	15.8	14.9	15.0	14.2	12.5	10.3	8.4	7.3
16.0				13.2	13.3	13.2	12.9	13.0	13.2	12.9	12.2	11.3	10.3	8.4	7.3
18.0					10.9	10.8	10.6	11.0	11.0	10.8	10.6	10.0	9.2	8.4	7.3
20.0					9.2	9.0	9.3	9.1	9.1	9.4	9.4	9.0	8.5	7.9	7.3
22.0						7.6	7.9	7.7	7.7	8.1	7.9	7.6	7.3	6.7	6.6
24.0							6.8	7.0	6.6	6.9	6.8	6.5	6.2	5.8	5.6
26.0							5.9	6.2	5.6	6.0	5.8	5.5	5.3	4.9	4.8
28.0								5.4	4.9	5.2	5.1	4.8	4.5	4.2	4.1
30.0								4.8	4.2	4.5	4.4	4.1	3.9	3.5	3.5
32.0									3.7	3.9	3.8	3.5	3.3	2.9	2.9
34.0									3.2	3.5	3.3	3.0	2.8	2.4	2.4
36.0										3.0	2.9	2.6	2.4	2.0	2.0
38.0										2.7	2.5	2.2	2.0	1.6	1.6
40.0											2.2	1.9	1.6	1.3	1.2
42.0											1.9	1.6	1.3	0.9	0.9
44.0												1.3	1.0	0.7	0.6
46.0												1.1	0.8		
48.0													0.6		



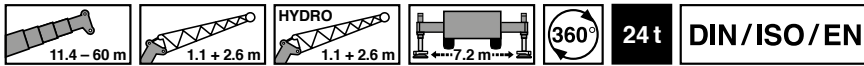
Crane Height (m)	11.4 m*	11.4 m	15.1 m	18.8 m	22.6 m	26.3 m	30.0 m	33.7 m	37.4 m	41.2 m	44.9 m	48.6 m	52.3 m	56.0 m	60.0 m
2.5	99.1	82.0	63.5	63.5	59.7	46.3	36.9								
3.0	92.9	74.0	63.5	63.5	59.7	46.3	36.9	29.3							
3.5	86.3	67.2	63.5	63.5	59.7	46.3	36.9	29.3	23.7						
4.0	75.1	61.4	61.1	60.8	59.6	46.3	36.9	29.3	23.8						
4.5	66.4	56.4	56.5	56.4	55.9	46.3	36.9	29.3	23.8	19.1					
5.0	59.4	52.0	52.0	52.4	52.2	46.3	36.9	29.3	23.8	19.1	15.9				
6.0	48.8	44.8	44.8	45.2	45.0	44.6	36.9	29.3	23.8	19.1	16.0	12.5			
7.0	41.1	39.1	39.1	39.7	39.7	39.1	34.6	29.3	23.8	19.1	16.0	12.5	10.3		
8.0	35.4	34.1	34.0	35.2	34.9	32.8	30.6	28.5	23.8	19.1	16.0	12.5	10.3	8.4	
9.0	30.7	30.0	29.9	31.0	29.8	28.1	27.7	26.0	23.4	19.1	16.0	12.5	10.3	8.4	7.3
10.0			26.4	26.9	25.8	24.7	24.2	23.3	21.7	19.1	16.0	12.5	10.3	8.4	7.3
11.0			22.3	22.8	22.7	22.6	21.4	20.7	19.5	18.1	16.0	12.5	10.3	8.4	7.3
12.0			19.1	19.5	20.0	20.2	19.2	18.5	17.4	16.6	15.6	12.5	10.3	8.4	7.3
14.0				15.6	15.7	15.6	15.3	15.3	14.8	14.6	13.6	12.5	10.3	8.4	7.3
16.0				12.4	12.6	12.5	12.1	12.6	12.6	12.2	11.6	11.0	10.3	8.4	7.3
18.0					10.3	10.2	10.5	10.3	10.3	10.2	10.5	9.9	9.2	8.4	7.3
20.0					8.6	8.5	8.8	8.6	8.6	9.0	8.8	8.5	8.0	7.4	7.2
22.0						7.2	7.4	7.5	7.2	7.6	7.5	7.1	6.9	6.3	6.1
24.0							6.3	6.7	6.1	6.5	6.3	6.0	5.8	5.4	5.2
26.0							5.5	5.8	5.2	5.6	5.4	5.1	4.9	4.5	4.5
28.0								5.0	4.5	4.8	4.7	4.4	4.1	3.8	3.8
30.0								4.4	3.9	4.2	4.0	3.7	3.5	3.2	3.1
32.0									3.3	3.6	3.5	3.2	3.0	2.6	2.6
34.0										2.9	3.2	3.0	2.7	2.1	2.1
36.0											2.8	2.6	2.3	1.7	1.7
38.0											2.4	2.2	2.0	1.4	1.3
40.0												1.9	1.6	1.0	1.0
42.0												1.7	1.3	0.7	0.7
44.0													1.1	0.8	0.5
46.0													0.9	0.6	

* Over rear · Nach hinten · A l'arrière · Hacia atrás · Indietro · Назад





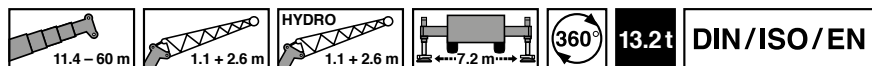
m	11.4 m + 1.1 m + 2.6 m			30.0 m + 1.1 m + 2.6 m			44.9 m + 1.1 m + 2.6 m			56.0 m + 1.1 m + 2.6 m			60.0 m + 1.1 m + 2.6 m		
	0°	22°	45°	0°	22°	45°	0°	22°	45°	0°	22°	45°	0°	22°	45°
3.0	36.3	35.3	25.7												
3.5	36.3	34.1	25.2		25.3										
4.0	36.3	32.9	24.8		29.1										
4.5	36.3	31.9	24.4		29.1	26.2									
5.0	36.3	30.9	24.1		29.1	26.0									
6.0	35.0	29.3	23.5		29.1	25.4									
7.0	31.9	27.9	23.2		29.1	24.9		11.0							
8.0	29.4	26.8	23.0	28.7	28.4	24.5		11.0	11.0						
9.0	27.3	25.6	23.0	26.6	26.3	24.1		11.0	11.0						
10.0	25.6	24.6		25.3	25.3	23.7		11.0	11.0		6.3	6.3			
11.0	24.3	23.9		25.3	25.3	23.1		11.0	11.0		6.3	6.3		5.5	
12.0	23.2	23.7		23.5	23.9	22.8		11.0	11.0		6.3	6.3		5.5	5.5
14.0				19.1	19.5	19.8		11.0	11.0		6.3	6.3		5.5	5.5
16.0				16.0	16.1	16.3	11.0	11.0	11.0		6.3	6.3		5.5	5.5
18.0				13.3	13.4	13.5	11.0	11.0	11.0		6.3	6.3		5.5	5.5
20.0				11.8	11.4	11.2	10.1	10.1	10.2		6.3	6.3	6.3	5.5	5.5
22.0				10.1	10.2	10.2	9.1	8.9	9.1		6.3	6.3	6.3	5.5	5.5
24.0				8.6	8.7		8.4	8.3	8.1		6.3	6.3	6.3	5.5	5.5
26.0				7.5	7.6		7.3	7.4	7.5		6.3	6.3	6.3	5.5	5.5
28.0				6.5	6.6		6.3	6.4	6.5		5.8	6.0	6.0	5.5	5.5
30.0				5.7			5.8	5.6	5.6		5.0	5.2	5.2	4.9	5.1
32.0							5.3	5.3	5.3		4.3	4.4	4.5	4.3	4.4
34.0							4.6	4.7			3.7	3.8	3.8	3.6	3.7
36.0							4.1	4.1			3.1	3.2	3.3	3.1	3.2
38.0							3.6	3.6			2.6	2.7	2.7	2.6	2.7
40.0							3.1	3.2			2.2	2.3	2.3	2.2	2.2
42.0							2.8	2.8			1.8	1.9		1.8	1.9
44.0							2.4				1.5	1.5		1.4	1.5
46.0							2.1				1.2	1.2		1.1	1.2
48.0											0.9	0.9		0.8	0.9
50.0											0.6	0.6		0.6	0.6



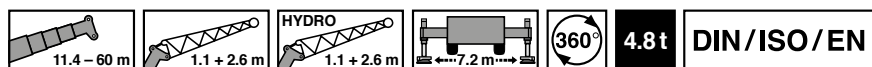
m	11.4 m + 1.1 m + 2.6 m			30.0 m + 1.1 m + 2.6 m			44.9 m + 1.1 m + 2.6 m			56.0 m + 1.1 m + 2.6 m			60.0 m + 1.1 m + 2.6 m		
	0°	22°	45°	0°	22°	45°	0°	22°	45°	0°	22°	45°	0°	22°	45°
3.0	36.3	35.3	25.7												
3.5	36.3	34.1	25.2		25.3										
4.0	36.3	32.9	24.8		29.1										
4.5	36.3	31.9	24.4		29.1	26.2									
5.0	36.3	30.9	24.1		29.1	26.0									
6.0	35.0	29.3	23.5		29.1	25.4									
7.0	31.9	27.9	23.2		29.1	24.9		11.0							
8.0	29.4	26.8	23.0	28.7	28.4	24.5		11.0	11.0						
9.0	27.3	25.6	23.0	26.6	26.3	24.1		11.0	11.0						
10.0	25.6	24.6		25.3	25.3	23.7		11.0	11.0		6.3	6.3			
11.0	24.3	23.9		22.7	23.2	23.1		11.0	11.0		6.3	6.3		5.5	
12.0	23.1	23.2		20.4	20.7	21.1		11.0	11.0		6.3	6.3		5.5	5.5
14.0				16.6	16.9	17.2		11.0	11.0		6.3	6.3		5.5	5.5
16.0				14.4	14.0	14.1	11.0	11.0	11.0		6.3	6.3		5.5	5.5
18.0				12.0	12.1	11.7	10.8	10.2	10.4		6.3	6.3		5.5	5.5
20.0				10.0	10.1	10.2	9.5	9.4	9.1		6.3	6.3	6.3	5.5	5.5
22.0				8.4	8.5	8.6	8.2	8.3	8.5		6.3	6.3	6.3	5.5	5.5
24.0				7.2	7.3		7.0	7.1	7.2		6.2	6.3	6.3	5.5	5.5
26.0				6.2	6.2		6.5	6.4	6.3		5.3	5.5	5.6	5.1	5.3
28.0				5.8	5.8		5.6	5.7	5.7		4.6	4.7	4.8	4.4	4.5
30.0				5.1			4.9	4.9	5.0		3.9	4.0	4.1	3.8	3.9
32.0							4.2	4.3	4.3		3.3	3.4	3.4	3.2	3.3
34.0							3.6	3.7			2.7	2.8	2.9	2.7	2.8
36.0							3.2	3.2			2.2	2.3	2.3	2.2	2.3
38.0							2.7	2.8			1.8	1.9	1.9	1.7	1.8
40.0							2.3	2.4			1.4	1.5	1.5	1.3	1.4
42.0							2.0	2.0			1.0	1.1		1.0	1.1
44.0							1.7				0.7	0.8		0.7	0.7
46.0							1.4				0.5	0.5		0.5	0.5

Mobile Cranes - Contract Lifting - Plant Movement - Abnormal Loads - Lorry Loaders

0845 279 4877 | www.jandmcranehire.co.uk | info@jandmcranehire.co.uk



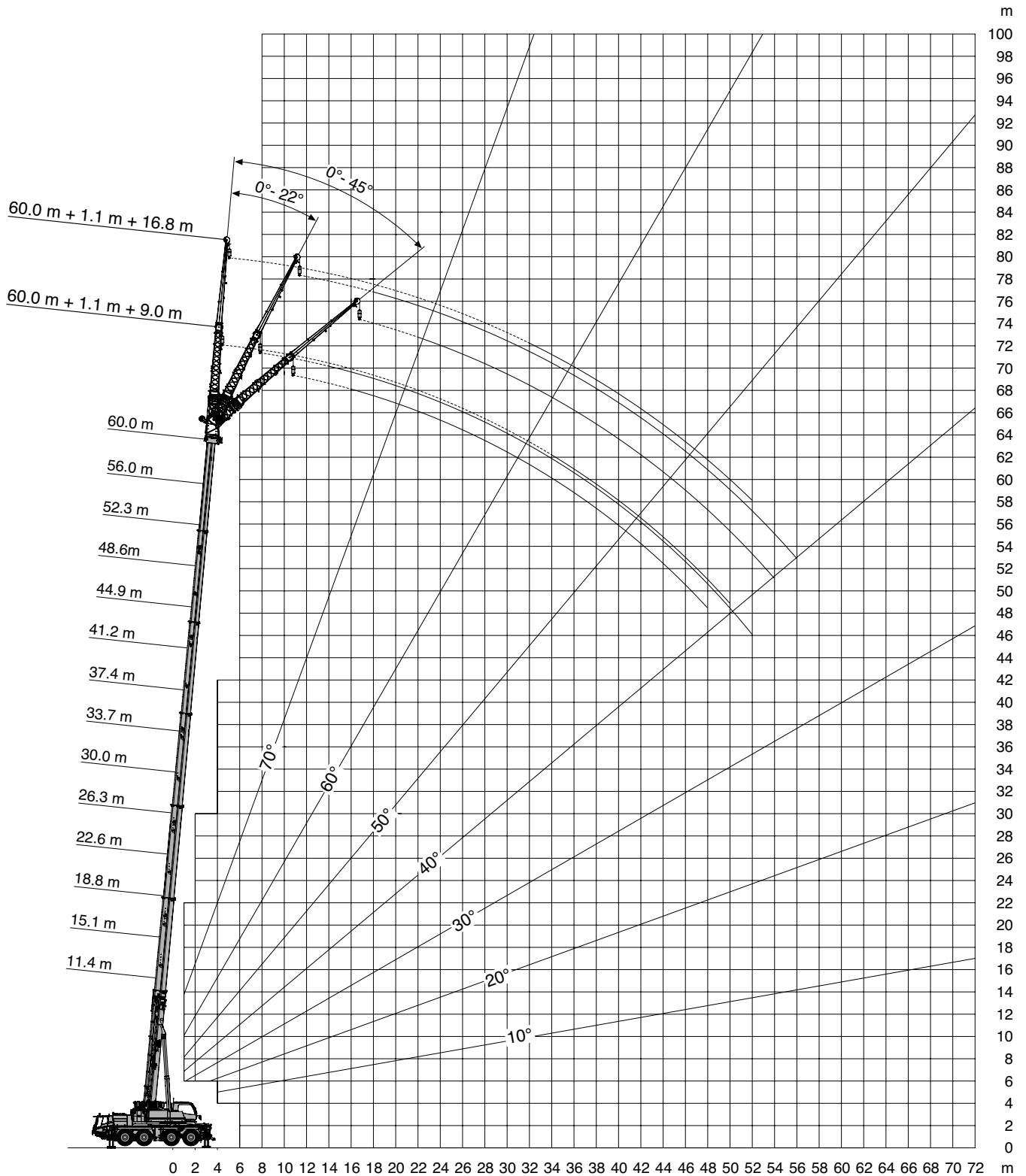
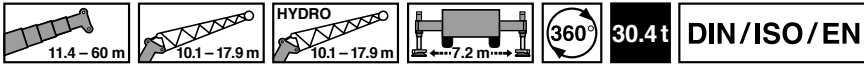
m	11.4 m + 1.1 m + 2.6 m			30.0 m + 1.1 m + 2.6 m			44.9 m + 1.1 m + 2.6 m			56.0 m + 1.1 m + 2.6 m			60.0 m + 1.1 m + 2.6 m		
	0°	22°	45°	0°	22°	45°	0°	22°	45°	0°	22°	45°	0°	22°	45°
3.0	36.3	35.3	25.7												
3.5	36.3	34.1	25.2		25.3										
4.0	36.3	32.9	24.8		29.1										
4.5	36.3	31.9	24.4		29.1	26.2									
5.0	36.3	30.9	24.1		29.1	26.0									
6.0	35.0	29.3	23.5		29.1	25.4									
7.0	31.9	27.9	23.2		29.1	24.9		11.0							
8.0	29.4	26.8	23.0	25.3	25.3	24.5		11.0	11.0						
9.0	27.3	25.6	23.0	21.9	22.5	23.1		11.0	11.0						
10.0	23.2	23.5		19.4	19.7	20.2		11.0	11.0		6.3	6.3			
11.0	19.5	19.7		17.9	17.3	17.7		11.0	11.0		6.3	6.3		5.5	
12.0	16.7	16.7		16.0	15.3	15.6		11.0	11.0		6.3	6.3		5.5	5.5
14.0				12.8	13.1	13.2		11.0	11.0		6.3	6.3		5.5	5.5
16.0				10.0	10.3	10.4	9.2	9.4	9.7		6.3	6.3		5.5	5.5
18.0				8.6	8.3	8.3	8.1	8.1	8.1		6.3	6.3		5.5	5.5
20.0				7.0	7.1	7.2	6.9	7.1	7.2	5.4	5.6	5.8		5.4	5.5
22.0				5.8	5.9	6.0	5.7	5.9	5.9	4.4	4.6	4.8	4.3	4.5	4.6
24.0				5.3	5.2		4.7	4.9	4.9	3.6	3.8	3.9	3.5	3.6	3.8
26.0				4.5	4.6		3.9	4.0	4.1	2.9	3.1	3.2	2.8	2.9	3.0
28.0				3.9	3.9		3.3	3.4	3.4	2.3	2.4	2.5	2.2	2.3	2.4
30.0				3.3			2.7	2.8	2.8	1.8	1.9	2.0	1.7	1.8	1.9
32.0							2.2	2.3	2.3	1.3	1.4	1.5	1.2	1.3	1.4
34.0							1.8	1.9		0.9	1.0	1.0	0.8	0.9	1.0
36.0							1.4	1.5		0.5	0.6	0.7		0.5	0.6
38.0							1.1	1.2							
40.0							0.8	0.9							
42.0							0.6	0.6							

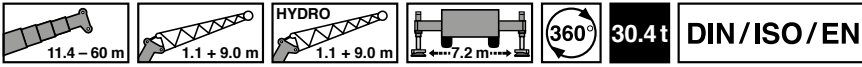


m	11.4 m + 1.1 m + 2.6 m			30.0 m + 1.1 m + 2.6 m			44.9 m + 1.1 m + 2.6 m			56.0 m + 1.1 m + 2.6 m			60.0 m + 1.1 m + 2.6 m		
	0°	22°	45°	0°	22°	45°	0°	22°	45°	0°	22°	45°	0°	22°	45°
3.0	36.3	35.3	25.7												
3.5	36.3	34.1	25.2		25.3										
4.0	36.3	32.9	24.8		29.1										
4.5	36.3	31.9	24.4		29.1	26.2									
5.0	36.3	30.9	24.1		29.1	26.0									
6.0	35.0	29.3	23.5		27.1	25.4									
7.0	31.9	27.9	23.2		23.7	24.5		11.0							
8.0	25.8	26.4	23.0	20.5	19.9	20.6		11.0	11.0						
9.0	20.2	20.6	20.8	17.5	17.7	17.4		11.0	11.0						
10.0	16.4	16.7		15.1	15.6	15.4		11.0	11.0		6.3	6.3			
11.0	13.6	13.8		13.2	13.6	14.0		11.0	11.0		6.3	6.3		5.5	
12.0	11.4	11.5		12.0	12.0	12.3		10.1	10.5		6.3	6.3		5.5	5.5
14.0				9.2	9.4	9.6		8.1	8.2		6.3	6.3		5.5	5.5
16.0				7.6	7.6	7.5	6.6	6.9	7.1		5.2	5.4		5.0	5.2
18.0				6.0	6.1	6.2	5.4	5.6	5.7		4.0	4.2		3.8	4.0
20.0				4.8	4.9	5.0	4.2	4.4	4.5	2.8	3.0	3.2		2.9	3.0
22.0				3.9	4.0	4.0	3.3	3.5	3.5	2.0	2.2	2.4	1.9	2.1	2.2
24.0				3.1	3.2		2.6	2.7	2.8	1.4	1.6	1.7	1.3	1.5	1.6
26.0				2.5	2.6		2.0	2.1	2.1	0.9	1.0	1.1	0.7	0.9	1.0
28.0				2.1	2.1		1.5	1.6	1.6		0.5	0.6			0.5
30.0				1.6			1.0	1.1	1.1						
32.0							0.7	0.7	0.8						

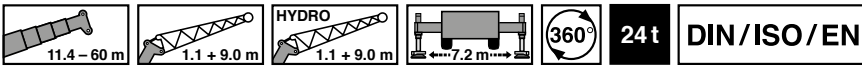
Mobile Cranes - Contract Lifting - Plant Movement - Abnormal Loads - Lorry Loaders

0845 279 4877 | www.jandmcranehire.co.uk | info@jandmcranehire.co.uk





m	11.4 m + 1.1 m + 9.0 m			30.0 m + 1.1 m + 9.0 m			44.9 m + 1.1 m + 9.0 m			56.0 m + 1.1 m + 9.0 m			60.0 m + 1.1 m + 9.0 m		
	0°	22°	45°	0°	22°	45°	0°	22°	45°	0°	22°	45°	0°	22°	45°
3.5		10.7													
4.0		10.7													
4.5		10.7													
5.0		10.7													
6.0		10.7			10.7										
7.0		10.7	9.5		10.7										
8.0	10.7	10.7	9.1		10.7										
9.0	10.7	10.7	8.7		10.7	9.3		5.0							
10.0	10.7	10.7	8.3		10.7	9.1		5.0							
11.0	10.7	10.3	8.0		10.7	8.9		5.0							
12.0	10.7	9.7	7.7		10.7	8.7		5.0	5.0		4.0				
14.0	9.1	8.8	7.3		10.7	8.3		5.0	5.0		4.0			3.6	
16.0	7.9	8.1	7.1		10.5	7.9		5.0	5.0		4.0	4.0		3.6	3.6
18.0	6.9	7.6		10.7	9.9	7.6		5.0	5.0		4.0	4.0		3.6	3.6
20.0				10.7	9.4	7.4		5.0	5.0		4.0	4.0		3.6	3.6
22.0				9.7	9.2	7.2		5.0	5.0		4.0	4.0		3.6	3.6
24.0				8.4	8.6	7.0	5.0	5.0	5.0		4.0	4.0		3.6	3.6
26.0				7.2	7.7	6.8	5.0	5.0	5.0		4.0	4.0		3.6	3.6
28.0				6.5	6.6	6.7	5.0	5.0	5.0		4.0	4.0		3.6	3.6
30.0				6.1	5.7		5.0	5.0	5.0	4.0	4.0	4.0		3.6	3.6
32.0				5.4	5.2		4.9	4.9	4.8	4.0	4.0	4.0		3.6	3.6
34.0				4.8	5.0		4.3	4.6	4.4	3.7	4.0	4.0	3.6	3.6	3.6
36.0				4.3			4.0	4.0	4.2	3.2	3.5	3.8	3.1	3.5	3.6
38.0							3.7	3.6	3.6	2.7	3.0	3.3	2.6	3.0	3.2
40.0							3.2	3.4		2.3	2.6	2.8	2.2	2.5	2.7
42.0							2.9	3.0		1.9	2.2	2.4	1.8	2.1	2.3
44.0							2.5	2.7		1.5	1.8	2.0	1.4	1.7	1.9
46.0							2.2	2.3		1.2	1.5	1.6	1.1	1.4	1.6
48.0							1.9	2.0		0.9	1.2		0.8	1.1	1.2
50.0							1.7			0.7	0.9		0.6	0.8	
52.0							1.5				0.6			0.6	



m	11.4 m + 1.1 m + 9.0 m			30.0 m + 1.1 m + 9.0 m			44.9 m + 1.1 m + 9.0 m			56.0 m + 1.1 m + 9.0 m			60.0 m + 1.1 m + 9.0 m		
	0°	22°	45°	0°	22°	45°	0°	22°	45°	0°	22°	45°	0°	22°	45°
3.5		10.7													
4.0		10.7													
4.5		10.7													
5.0		10.7													
6.0		10.7			10.7										
7.0		10.7	9.5		10.7										
8.0	10.7	10.7	9.1		10.7										
9.0	10.7	10.7	8.7		10.7	9.3		5.0							
10.0	10.7	10.7	8.3		10.7	9.1		5.0							
11.0	10.7	10.3	8.0		10.7	8.9		5.0							
12.0	10.7	9.7	7.7		10.7	8.7		5.0	5.0		4.0				
14.0	9.1	8.8	7.3		10.7	8.3		5.0	5.0		4.0			3.6	
16.0	7.9	8.1	7.1		10.5	7.9		5.0	5.0		4.0	4.0		3.6	3.6
18.0	6.9	7.6		10.7	9.9	7.6		5.0	5.0		4.0	4.0		3.6	3.6
20.0				9.6	9.4	7.4		5.0	5.0		4.0	4.0		3.6	3.6
22.0				8.2	8.8	7.2		5.0	5.0		4.0	4.0		3.6	3.6
24.0				7.5	7.4	6.9	5.0	5.0	5.0		4.0	4.0		3.6	3.6
26.0				6.6	6.3	6.6	5.0	5.0	5.0		4.0	4.0		3.6	3.6
28.0				5.7	5.7	5.6	5.0	5.0	5.0		4.0	4.0		3.6	3.6
30.0				5.0	5.3		4.8	4.9	4.8	3.8	4.0	4.0		3.6	3.6
32.0				4.4	4.6		4.3	4.2	4.5	3.2	3.7	4.0		3.5	3.6
34.0				4.0	4.0		3.7	3.9	3.8	2.7	3.2	3.5	2.6	3.0	3.3
36.0				3.7			3.2	3.5	3.6	2.3	2.6	2.9	2.2	2.5	2.8
38.0							2.8	3.0	3.2	1.8	2.2	2.4	1.7	2.1	2.4
40.0							2.4	2.6		1.4	1.8	2.0	1.4	1.7	1.9
42.0							2.1	2.3		1.1	1.4	1.6	1.0	1.3	1.5
44.0							1.8	1.9		0.8	1.1	1.2	0.7	1.0	1.2
46.0							1.5	1.6		0.5	0.8	0.9		0.7	0.8
48.0							1.3	1.4			0.5				0.6
50.0							1.0								
52.0							0.9								