

Table of contents

SPECIFICATION	1
LIFTING CAPACITIES	
Boom	2
Stationary on rubber	2
Pick & carry	2
17.5m Boom+6.5m SL Jib	3
17.5m Boom+10.25m SL Jib	3
17.5m Boom+14.0m SL Jib	3
32.5m Boom+6.5m SL Jib	5
32.5m Boom+10.25m SL Jib	5
32.5m Boom+14.0m SL Jib	5
Notes for the lifting capacity chart	7
WORKING RANGE	8
Minimum path width	9
Overall view	10



LIFTING CAPACITIES

7.5m — 32.5m Boom

NOT EXCEED 10% OF STATIC LIFTING FORCE

Working radius (m)	(6.8m)						(6.3m)							
	Outriggers fully extended (6.8m) - 360° full range						Outriggers intermediately extended (6.3m) - over side							
	7.5m Boom	12.5m Boom	17.5m Boom	22.5m Boom	27.5m Boom	32.5m Boom	7.5m Boom	12.5m Boom	17.5m Boom	22.5m Boom	27.5m Boom	32.5m Boom		
2.6	35.00*	19.00	17.00	12.00			35.00*	19.00	17.00	12.00				
3.0	32.00*	19.00	17.00	12.00			32.00*	19.00	17.00	12.00				
3.3	30.00	19.00	17.00	12.00			28.50	19.00	17.00	12.00				
3.5	28.80	19.00	17.00	12.00	9.00		27.80	19.00	17.00	12.00	9.00			
4.0	26.00	19.00	17.00	12.00	9.00		25.00	19.00	17.00	12.00	9.00			
4.5	23.00	19.00	17.00	12.00	9.00	7.00	22.50	19.00	17.00	12.00	9.00	7.00		
5.0	20.50	19.00	17.00	12.00	9.00	7.00	20.30	19.00	17.00	12.00	9.00	7.00		
5.5		18.50	15.85	12.00	9.00	7.00		18.50	15.85	12.00	9.00	7.00		
6.0		17.00	14.75	12.00	9.00	7.00		17.00	14.75	12.00	9.00	7.00		
6.5		15.50	13.80	12.00	9.00	7.00		15.50	13.80	12.00	9.00	7.00		
7.0		14.20	12.95	11.40	9.00	7.00		13.40	12.95	11.40	9.00	7.00		
8.0		11.70	11.50	10.15	8.60	7.00		10.15	10.10	10.15	8.60	7.00		
9.0		9.20	9.15	9.05	7.80	6.45		7.95	7.90	8.65	7.80	6.45		
10.0		7.45	7.40	8.10	7.10	5.90		6.45	6.35	7.05	7.10	5.90		
11.0			6.10	6.75	6.55	5.45			5.20	5.85	6.25	5.45		
12.0			5.05	5.70	6.00	5.00			4.30	4.95	5.30	5.00		
13.0			4.20	4.85	5.25	4.60			3.55	4.20	4.55	4.60		
14.0			3.50	4.15	4.55	4.25			2.90	3.55	3.95	4.15		
15.0			2.95	3.55	3.95	3.95			2.40	3.00	3.40	3.60		
16.0				3.05	3.45	3.65				2.55	2.95	3.15		
17.0				2.65	3.00	3.25				2.20	2.55	2.75		
18.0				2.25	2.65	2.85				1.85	2.20	2.40		
19.0				1.95	2.30	2.50				1.55	1.90	2.10		
20.0				1.65	2.00	2.20				1.30	1.65	1.85		
22.0					1.50	1.75					1.20	1.40		
24.0						1.15	1.35					0.85	1.05	
26.0							1.00						0.75	
28.0							0.75						0.50	
30.0							0.55							
Critical boom angle	—	—	—	—	—	—	—	—	—	—	—	—	15°	
Standard hook for 35 ton	For 22 ton						For 22 ton							
Hook mass	310kg						215kg							
Parts of line	10*/8						6						4	

(Unit: Metric ton)

Working radius (m)	(5.2m)						(4.2m)						(2.31m)					
	Outriggers intermediately extended (5.2m) - over side						Outriggers intermediately extended (4.2m) - over side						Outriggers completely retracted (2.31m) - over side					
	7.5m Boom	12.5m Boom	17.5m Boom	22.5m Boom	27.5m Boom	32.5m Boom	7.5m Boom	12.5m Boom	17.5m Boom	22.5m Boom	27.5m Boom	32.5m Boom	7.5m Boom	12.5m Boom	17.5m Boom	22.5m Boom	27.5m Boom	32.5m Boom
2.6	30.00	19.00	17.00	12.00			30.00	19.00	17.00	12.00			12.00	12.00	10.50	10.50		
3.0	30.00	19.00	17.00	12.00			27.00	19.00	17.00	12.00			12.00	12.00	10.50	10.50		
3.5	26.50	19.00	17.00	12.00	9.00		23.00	19.00	17.00	12.00	9.00		9.10	9.00	8.65	8.80	7.40	
4.0	23.50	19.00	17.00	12.00	9.00		19.00	19.00	17.00	12.00	9.00		7.10	7.00	7.00	7.35	6.30	
4.5	21.00	19.00	17.00	12.00	9.00	7.00	15.65	15.50	15.35	12.00	9.00	7.00	5.70	5.60	5.60	6.15	5.45	5.30
5.0	19.00	18.50	17.00	12.00	9.00	7.00	12.55	12.45	12.45	12.00	9.00	7.00	4.65	4.50	4.55	5.25	4.70	4.65
5.5		15.35	15.35	12.00	9.00	7.00		10.25	10.25	11.15	9.00	7.00		3.75	3.70	4.40	4.10	4.10
6.0		12.75	12.75	12.00	9.00	7.00		8.60	8.60	9.45	9.00	7.00		3.10	3.05	3.75	3.50	3.60
6.5		10.80	10.80	11.65	9.00	7.00		7.35	7.35	8.10	8.60	7.00		2.55	2.55	3.15	3.15	3.20
7.0		9.30	9.30	10.10	9.00	7.00		6.30	6.30	7.05	7.50	7.00		2.10	2.10	2.70	2.75	2.80
8.0		7.10	7.10	7.80	8.30	7.00		4.80	4.80	5.45	5.90	6.10		1.35	1.30	1.95	2.10	2.20
9.0		5.60	5.55	6.25	6.65	6.45		3.75	3.70	4.30	4.70	4.90				1.40	1.55	1.70
10.0		4.50	4.40	5.05	5.45	5.70		2.90	2.90	3.45	3.85	4.05						
11.0			3.50	4.20	4.55	4.75			2.20	2.80	3.20	3.35						
12.0			2.80	3.45	3.85	4.05			1.65	2.30	2.65	2.80						
13.0			2.20	2.85	3.25	3.45			1.20	1.80	2.20	2.35						
14.0			1.75	2.35	2.75	2.95			0.75	1.40	1.80	2.00						
15.0			1.35	1.95	2.30	2.50			0.40	1.10	1.45	1.65						
16.0				1.60	1.95	2.15				0.80	1.15	1.35						
17.0				1.25	1.65	1.85				0.50	0.90	1.10						
18.0				1.00	1.35	1.55					0.65	0.90						
19.0				0.80	1.10	1.35					0.45	0.70						
20.0				0.55	0.90	1.10						0.55						
22.0					0.55	0.75												
24.0						0.45												
Critical boom angle	—	—	—	—	26°	36°	—	—	—	32°	40°	48°	—	35°	55°	61°	67°	72°
Standard hook for 35 ton	For 22 ton						For 22 ton						For 22 ton					
Hook mass	310kg						215kg						310kg					
Parts of line	8						6						4					

(Unit: Metric ton)



Stationary on rubber · Pick and carry

When outriggers are not used

Working radius (m)	Stationary on rubber								Pick & carry (less than 2km/h)								Working radius (m)
	7.5m Boom		12.5m Boom		17.5m Boom		22.5m Boom		7.5m Boom		12.5m Boom		17.5m Boom		22.5m Boom		
	Over front	360° full range	Over front	360° full range	Over front	360° full range	Over front	360° full range	Over front	360° full range	Over front	360° full range	Over front	360° full range	Over front	360° full range	
2.5	14.00	8.20	12.00	6.50	8.00	6.50		9.50	6.00	9.50	5.50	7.00	5.50		6.00	4.50	2.5
3.0	14.00	8.20	12.00	6.50	8.00	6.50	6.50	5.00	9.50	6.00	9.50	5.50	7.00	5.50	6.00	4.50	3.0
3.5	12.50	6.10	11.00	5.30	8.00	5.20	6.50	5.00	8.50	4.50	8.60	4.40	7.00	4.40	6.00	4.50	3.5
4.0	11.00	4.70	10.00	4.20	8.00	4.00	6.50	5.00	7.50	3.55	7.50	3.55	7.00	3.55	6.00	3.90	4.0
4.5	10.00	3.80	9.00	3.40	8.00	3.30	6.50	4.10	6.60	2.85	6.60	2.85	6.40	2.85	6.00	3.40	4.5
5.0	9.00	2.80	8.00	2.70	8.00	2.70	6.50	3.45	5.80	2.30	5.90	2.25	5.80	2.25	5.60	2.90	5.0
5.5			6.80	2.20	7.30	2.20	6.50	2.90			5.30	1.75	5.20	1.75	5.20	2.40	5.5
6.0			5.80	1.80	6.50	1.80	5.80	2.45			4.70	1.30	4.70	1.30	4.70	2.00	6.0
6.5			5.10	1.40	5.70	1.40	5.10	2.00			4.20	0.90	4.20	0.85	4.20	1.50	6.5
7.0			4.40	1.00	4.90	1.00	4.70	1.60			3.70		3.70		3.70	1.10	7.0
8.0			3.40		3.40		3.90	1.00			2.80		2.80		2.90		8.0
9.0			2.60		2.60		3.15				1.90		1.90		2.30		9.0
10.0			2.00		1.90		2.50				1.00		1.00		1.70		10.0
11.0					1.30		1.85						0.60		1.10		11.0
12.0					0.80		1.35								0.70		12.0
13.0					0.50		0.90								0.50		13.0
14.0							0.55										14.0
Critical boom angle	—	—	—	44°	31°	60°	45°	64°	—	—	—	48°	37°	62°	48°	67°	Critical boom angle
Standard hook	For 22 ton								For 22 ton								Standard hook
Hook mass	215kg								215kg								Hook mass
Parts of line	4								4								Parts of line

(Unit: Metric ton)



17.5m Boom + 6.5m SL Jib

Outriggers fully extended (6.8m) 360° full range

Boom angle (°)	Offset 7°		Offset 25°		Offset 45°		Offset 60°	
	Working radius (m)	Load (ton)	Working radius (m)	Load (ton)	Working radius (m)	Load (ton)	Working radius (m)	Load (ton)
83	2.7	3.20	4.5	3.20	6.2	2.20	7.0	1.60
80	3.8	3.20	5.7	3.20	7.2	2.20	8.1	1.60
75	5.8	3.20	7.7	3.18	9.1	2.20	9.6	1.60
70	7.8	3.20	9.6	2.97	10.8	2.13	11.1	1.60
66	9.4	3.20	11.0	2.82	12.1	2.09	12.3	1.59
63	10.4	3.20	12.0	2.72	13.0	2.06	13.2	1.58
60	11.6	3.20	13.1	2.63	13.8	2.04		
55	13.3	3.15	14.6	2.53	15.3	2.03		
50	14.7	2.95	16.0	2.45	16.4	2.03		
46	16.0	2.79	16.9	2.40	17.2	2.02		
40	17.4	2.26	18.2	1.99				
35	18.5	1.88	19.2	1.68				
30	19.5	1.52	20.1	1.36				
26	20.1	1.32	20.8	1.12				
20	20.7	1.14						
15	21.3	0.96						
8	21.8	0.77						
Critical boom angle	7°		25°		45°		62°	
Standard hook	For 4 ton							
Hook mass	60kg							
Parts of line	1							

731-75102000

Outriggers intermediately extended (6.3m) over side

Boom angle (°)	Offset 7°		Offset 25°		Offset 45°		Offset 60°	
	Working radius (m)	Load (ton)	Working radius (m)	Load (ton)	Working radius (m)	Load (ton)	Working radius (m)	Load (ton)
83	2.7	3.20	4.5	3.20	6.2	2.20	7.0	1.60
80	3.8	3.20	5.7	3.20	7.2	2.20	8.1	1.60
75	5.8	3.20	7.7	3.18	9.1	2.20	9.6	1.60
70	7.8	3.20	9.6	2.97	10.8	2.13	11.1	1.60
66	9.4	3.20	11.0	2.82	12.1	2.09	12.3	1.59
63	10.4	3.20	12.0	2.72	13.0	2.06	13.2	1.58
60	11.6	3.20	13.1	2.63	13.8	2.04		
55	13.3	3.15	14.6	2.53	15.3	2.03		
50	14.7	2.95	16.0	2.45	16.4	2.03		
46	16.0	2.42	16.9	2.09	17.2	2.02		
40	17.4	1.86	18.2	1.63				
35	18.5	1.49	19.2	1.29				
30	19.5	1.15	20.0	1.05				
26	20.1	0.97	20.7	0.80				
20	20.7	0.80						
15	21.3	0.60						
8	21.8	0.41						
Critical boom angle	7°		25°		45°		62°	
Standard hook	For 4 ton							
Hook mass	60kg							
Parts of line	1							

17.5m Boom + 10.25m SL Jib

Outriggers fully extended (6.8m) 360° full range

Boom angle (°)	Offset 5°		Offset 25°		Offset 45°		Offset 60°	
	Working radius (m)	Load (ton)	Working radius (m)	Load (ton)	Working radius (m)	Load (ton)	Working radius (m)	Load (ton)
83	3.1	2.00	6.5	1.90	9.1	1.20	10.4	0.90
80	4.5	2.00	8.0	1.90	10.4	1.20	11.5	0.90
75	7.0	2.00	10.2	1.67	12.3	1.17	13.2	0.90
70	9.2	2.00	12.3	1.50	14.1	1.12	15.0	0.89
66	11.0	2.00	13.8	1.39	15.5	1.08	16.1	0.88
63	12.3	2.00	14.9	1.33	16.5	1.06	16.8	0.87
60	13.6	1.92	16.0	1.27	17.4	1.04		
55	15.5	1.69	17.5	1.20	18.8	1.02		
50	17.4	1.50	19.2	1.13	20.0	1.01		
46	18.7	1.40	20.3	1.10	20.9	1.01		
40	20.4	1.28	21.8	1.06				
35	21.7	1.21	22.9	1.04				
30	22.7	1.16	23.7	1.03				
26	23.4	1.07	24.2	1.03				
20	24.5	0.85						
15	25.2	0.72						
6	25.6	0.60						
Critical boom angle	5°		25°		45°		62°	
Standard hook	For 4 ton							
Hook mass	60kg							
Parts of line	1							

731-75102000

Outriggers intermediately extended (6.3m) over side

Boom angle (°)	Offset 5°		Offset 25°		Offset 45°		Offset 60°	
	Working radius (m)	Load (ton)	Working radius (m)	Load (ton)	Working radius (m)	Load (ton)	Working radius (m)	Load (ton)
83	3.1	2.00	6.5	1.90	9.1	1.20	10.4	0.90
80	4.5	2.00	8.0	1.90	10.4	1.20	11.5	0.90
75	7.0	2.00	10.2	1.67	12.3	1.17	13.2	0.90
70	9.2	2.00	12.3	1.50	14.1	1.12	15.0	0.89
66	11.0	2.00	13.8	1.39	15.5	1.08	16.1	0.88
63	12.3	2.00	14.9	1.33	16.5	1.06	16.8	0.87
60	13.6	1.92	16.0	1.27	17.4	1.04		
55	15.5	1.69	17.5	1.20	18.8	1.02		
50	17.4	1.50	19.2	1.13	20.0	1.01		
46	18.7	1.40	20.3	1.10	20.9	1.01		
40	20.4	1.28	21.8	1.06				
35	21.7	1.07	22.9	0.87				
30	22.7	0.86	23.7	0.71				
26	23.4	0.72	24.2	0.61				
20	24.5	0.53						
15	25.2	0.40						
6	25.6	0.32						
Critical boom angle	5°		25°		45°		62°	
Standard hook	For 4 ton							
Hook mass	60kg							
Parts of line	1							

17.5m Boom + 14.0m SL Jib

Outriggers fully extended (6.8m) 360° full range

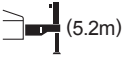
Boom angle (°)	Offset 5°		Offset 25°		Offset 45°		Offset 60°	
	Working radius (m)	Load (ton)	Working radius (m)	Load (ton)	Working radius (m)	Load (ton)	Working radius (m)	Load (ton)
83	4.0	1.35	8.7	0.80	12.1	0.50	14.0	0.40
80	6.8	1.35	10.2	0.80	13.5	0.50	15.3	0.40
75	8.5	1.35	12.7	0.71	15.6	0.48	17.1	0.40
70	11.1	1.22	15.0	0.63	17.6	0.45	18.5	0.40
66	13.0	1.03	16.7	0.59	19.0	0.44	19.7	0.40
63	14.5	0.92	18.0	0.55	20.1	0.43	20.0	0.40
60	15.8	0.83	19.1	0.53	20.9	0.42		
55	18.0	0.72	21.0	0.49	22.3	0.42		
50	20.0	0.64	22.7	0.46	23.8	0.41		
46	21.5	0.59	24.0	0.45	25.0	0.41		
40	23.4	0.54	25.5	0.43				
35	25.1	0.50	26.5	0.42				
30	26.3	0.47	27.4	0.42				
26	27.2	0.46	28.0	0.42				
20	28.1	0.44						
15	28.9	0.43						
6	29.3	0.43						
Critical boom angle	5°		25°		45°		62°	
Standard hook	For 4 ton							
Hook mass	60kg							
Parts of line	1							

731-75103000

Outriggers intermediately extended (6.3m) over side

Boom angle (°)	Offset 5°		Offset 25°		Offset 45°		Offset 60°	
	Working radius (m)	Load (ton)	Working radius (m)	Load (ton)	Working radius (m)	Load (ton)	Working radius (m)	Load (ton)
83	4.0	1.35	8.7	0.80	12.1	0.50	14.0	0.40
80	6.8	1.35	10.2	0.80	13.5	0.50	15.3	0.40
75	8.5	1.35	12.7	0.71	15.6	0.48	17.1	0.40
70	11.1	1.22	15.0	0.63	17.6	0.45	18.5	0.40
66	13.0	1.03	16.7	0.59	19.0	0.44	19.7	0.40
63	14.5	0.92	18.0	0.55	20.1	0.43	20.0	0.40
60	15.8	0.83	19.1	0.53	20.9	0.42		
55	18.0	0.72	21.0	0.49	22.3	0.42		
50	20.0	0.64	22.7	0.46	23.8	0.41		
46	21.5	0.59	24.0	0.45	25.0	0.41		
40	23.4	0.54	25.5	0.43				
35	25.1	0.50	26.5	0.42				
30	26.3	0.47	27.4	0.42				
26	27.2	0.46	28.0	0.42				
20	28.1	0.44						
15	28.9	0.43						
6	29.3	0.30						
Critical boom angle	14°		25°		45°		62°	
Standard hook	For 4 ton							
Hook mass	60kg							
Parts of line	1							

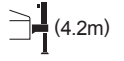
17.5m Boom+6.5m SL Jib



Outriggers intermediately extended (5.2m) over side

Boom angle (°)	Offset 7°		Offset 25°		Offset 45°		Offset 60°	
	Working radius (m)	Load (ton)	Working radius (m)	Load (ton)	Working radius (m)	Load (ton)	Working radius (m)	Load (ton)
83	2.7	3.20	4.5	3.20	6.2	2.20	7.0	1.60
80	3.8	3.20	5.7	3.20	7.2	2.20	8.1	1.60
75	5.8	3.20	7.7	3.18	9.1	2.20	9.6	1.60
70	7.8	3.20	9.6	2.97	10.8	2.13	11.1	1.60
66	9.4	3.20	11.0	2.82	12.1	2.09	12.3	1.59
63	10.4	3.20	12.0	2.72	13.0	2.06	13.2	1.58
60	11.6	3.20	13.1	2.63	13.8	2.04		
55	13.3	2.61	14.6	2.27	15.3	1.87		
50	14.7	1.95	16.0	1.65	16.4	1.36		
46	16.0	1.42	16.9	1.29	17.2	1.08		
40	17.4	0.92	18.2	0.84				
35	18.5	0.57	19.2	0.54				
30	19.5	0.33	20.0	0.30				
Critical boom angle	29°		29°		45°		62°	
Standard hook	For 4 ton							
Hook mass	60kg							
Parts of line	1							

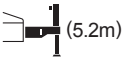
731-75102000



Outriggers intermediately extended (4.2m) over side

Boom angle (°)	Offset 7°		Offset 25°		Offset 45°		Offset 60°	
	Working radius (m)	Load (ton)	Working radius (m)	Load (ton)	Working radius (m)	Load (ton)	Working radius (m)	Load (ton)
83	2.7	3.20	4.5	3.20	6.2	2.20	7.0	1.60
80	3.8	3.20	5.7	3.20	7.2	2.20	8.1	1.60
75	5.8	3.20	7.7	3.18	9.1	2.20	9.6	1.60
70	7.8	3.20	9.6	2.97	10.8	2.13	11.1	1.60
66	9.4	3.20	11.0	2.82	12.1	2.09	12.3	1.59
63	10.4	2.98	12.0	2.35	13.0	2.06	13.2	1.58
60	11.6	2.35	13.1	1.91	13.8	1.73		
55	13.3	1.51	14.6	1.31	15.2	1.17		
50	14.7	0.92	16.0	0.75	16.3	0.73		
46	16.0	0.45	16.9	0.39	17.1	0.38		
Critical boom angle	45°		45°		45°		62°	
Standard hook	For 4 ton							
Hook mass	60kg							
Parts of line	1							

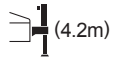
17.5m Boom+10.25m SL Jib



Outriggers intermediately extended (5.2m) over side

Boom angle (°)	Offset 5°		Offset 25°		Offset 45°		Offset 60°	
	Working radius (m)	Load (ton)	Working radius (m)	Load (ton)	Working radius (m)	Load (ton)	Working radius (m)	Load (ton)
83	3.1	2.00	6.5	1.90	9.1	1.20	10.4	0.90
80	4.5	2.00	8.0	1.90	10.4	1.20	11.5	0.90
75	7.0	2.00	10.2	1.67	12.3	1.17	13.2	0.90
70	9.2	2.00	12.3	1.50	14.1	1.12	15.0	0.89
66	11.0	2.00	13.8	1.39	15.5	1.08	16.1	0.88
63	12.3	2.00	14.9	1.33	16.5	1.06	16.8	0.87
60	13.6	1.92	16.0	1.27	17.4	1.04		
55	15.5	1.69	17.5	1.20	18.8	1.02		
50	17.4	1.42	19.2	1.09	20.0	1.01		
46	18.7	1.08	20.3	0.81	20.9	0.73		
40	20.4	0.65	21.8	0.49				
35	21.7	0.36						
Critical boom angle	34°		39°		45°		62°	
Standard hook	For 4 ton							
Hook mass	60kg							
Parts of line	1							

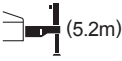
731-75102000



Outriggers intermediately extended (4.2m) over side

Boom angle (°)	Offset 5°		Offset 25°		Offset 45°		Offset 60°	
	Working radius (m)	Load (ton)	Working radius (m)	Load (ton)	Working radius (m)	Load (ton)	Working radius (m)	Load (ton)
83	3.1	2.00	6.5	1.90	9.1	1.20	10.4	0.90
80	4.5	2.00	8.0	1.90	10.4	1.20	11.5	0.90
75	7.0	2.00	10.2	1.67	12.3	1.17	13.2	0.90
70	9.2	2.00	12.3	1.50	14.1	1.12	15.0	0.89
66	11.0	2.00	13.8	1.39	15.5	1.08	16.1	0.88
63	12.3	2.00	14.9	1.33	16.5	1.06	16.8	0.87
60	13.6	1.79	16.0	1.27	17.4	1.04		
55	15.5	1.15	17.5	0.85	18.8	0.73		
50	17.4	0.60	19.2	0.42	20.0	0.35		
46	18.5	0.33						
Critical boom angle	45°		49°		49°		62°	
Standard hook	For 4 ton							
Hook mass	60kg							
Parts of line	1							

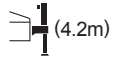
17.5m Boom+14.0m SL Jib



Outriggers intermediately extended (5.2m) over side

Boom angle (°)	Offset 5°		Offset 25°		Offset 45°		Offset 60°	
	Working radius (m)	Load (ton)	Working radius (m)	Load (ton)	Working radius (m)	Load (ton)	Working radius (m)	Load (ton)
83	4.0	1.35	8.7	0.80	12.1	0.50	14.0	0.40
80	6.8	1.35	10.2	0.80	13.5	0.50	15.3	0.40
75	8.5	1.35	12.7	0.71	15.6	0.48	17.1	0.40
70	11.1	1.22	15.0	0.63	17.6	0.45	18.5	0.40
66	13.0	1.03	16.7	0.59	19.0	0.44	19.7	0.40
63	14.5	0.92	18.0	0.55	20.1	0.43	20.0	0.40
60	15.8	0.83	19.1	0.53	20.9	0.42		
55	18.0	0.72	21.0	0.49	22.3	0.42		
50	20.0	0.64	22.7	0.46	23.8	0.41		
46	21.5	0.59	24.0	0.45	25.0	0.41		
40	23.4	0.49	25.5	0.37				
Critical boom angle	39°		39°		45°		62°	
Standard hook	For 4 ton							
Hook mass	60kg							
Parts of line	1							

731-75103000



Outriggers intermediately extended (4.2m) over side

Boom angle (°)	Offset 5°		Offset 25°		Offset 45°		Offset 60°	
	Working radius (m)	Load (ton)	Working radius (m)	Load (ton)	Working radius (m)	Load (ton)	Working radius (m)	Load (ton)
83	4.0	1.35	8.7	0.80	12.1	0.50	14.0	0.40
80	6.8	1.35	10.2	0.80	13.5	0.50	15.3	0.40
75	8.5	1.35	12.7	0.71	15.6	0.48	17.1	0.40
70	11.1	1.22	15.0	0.63	17.6	0.45	18.5	0.40
66	13.0	1.03	16.7	0.59	19.0	0.44	19.7	0.40
63	14.5	0.92	18.0	0.55	20.1	0.43	20.0	0.40
60	15.8	0.83	19.1	0.53	20.9	0.42		
55	18.0	0.72	21.0	0.49	22.3	0.42		
50	20.0	0.48	22.7	0.35				
Critical boom angle	49°		49°		54°		62°	
Standard hook	For 4 ton							
Hook mass	60kg							
Parts of line	1							



32.5m Boom + 6.5m SL Jib

Boom angle (°)	Offset 7°		Offset 25°		Offset 45°		Offset 60°	
	Working radius (m)	Load (ton)	Working radius (m)	Load (ton)	Working radius (m)	Load (ton)	Working radius (m)	Load (ton)
83	5.4	3.20	7.7	3.20	9.2	2.20	9.8	1.60
81	6.8	3.20	8.8	3.20	10.3	2.20	10.8	1.60
76	10.6	3.20	12.2	2.64	13.5	2.07	14.0	1.60
70	14.6	2.52	16.0	2.02	17.0	1.74	17.5	1.58
65	17.7	1.98	18.9	1.65	19.8	1.46	20.1	1.41
63	18.8	1.83	20.1	1.53	20.9	1.36	21.0	1.34
58	21.6	1.49	22.7	1.29	23.4	1.18		
56	22.7	1.26	23.7	1.20	24.3	1.11		
50	25.5	0.68	26.3	0.66	26.9	0.63		
45	27.7	0.32	28.4	0.32				
Critical boom angle	44°		44°		47°		62°	
Standard hook	For 4 ton							
Hook mass	60kg							
Parts of line	1							

731-75103000

Boom angle (°)	Offset 7°		Offset 25°		Offset 45°		Offset 60°	
	Working radius (m)	Load (ton)	Working radius (m)	Load (ton)	Working radius (m)	Load (ton)	Working radius (m)	Load (ton)
83	5.4	3.20	7.7	3.20	9.2	2.20	9.8	1.60
81	6.8	3.20	8.8	3.20	10.3	2.20	10.8	1.60
76	10.6	3.20	12.2	2.64	13.5	2.07	14.0	1.60
70	14.6	2.52	16.0	2.02	17.0	1.74	17.5	1.58
65	17.7	1.98	18.9	1.65	19.8	1.46	20.1	1.41
63	18.8	1.83	20.1	1.53	20.9	1.36	21.0	1.34
62	19.4	1.73	20.6	1.48	21.4	1.32		
60	20.5	1.44	21.7	1.33	22.4	1.25		
59	21.0	1.32	22.2	1.21	22.8	1.19		
55	23.0	0.89	24.1	0.83	24.6	0.82		
51	24.9	0.54	25.8	0.52	26.3	0.50		
48	26.2	0.31	27.1	0.31	27.4	0.30		
Critical boom angle	47°		47°		47°		62°	
Standard hook	For 4 ton							
Hook mass	60kg							
Parts of line	1							

32.5m Boom + 10.25m SL Jib

Boom angle (°)	Offset 5°		Offset 25°		Offset 45°		Offset 60°	
	Working radius (m)	Load (ton)	Working radius (m)	Load (ton)	Working radius (m)	Load (ton)	Working radius (m)	Load (ton)
83	6.0	2.00	9.8	1.90	12.2	1.20	13.3	0.90
80	8.4	2.00	12.0	1.81	14.1	1.20	15.1	0.90
75	12.6	2.00	15.6	1.58	17.5	1.13	18.2	0.88
71	15.7	2.00	18.4	1.45	20.0	1.09	20.6	0.87
69	17.1	1.89	19.7	1.38	21.2	1.07	21.7	0.86
65	19.7	1.57	22.2	1.19	23.6	1.02	23.7	0.86
63	21.0	1.43	23.4	1.10	24.7	0.97	24.7	0.86
57	24.6	1.11	26.8	0.90	27.6	0.82		
56	25.3	1.02	27.3	0.87	28.1	0.79		
55	25.8	0.93	27.8	0.82	28.5	0.78		
50	28.4	0.52	30.1	0.47	30.6	0.47		
48	29.3	0.39	30.9	0.36				
Critical boom angle	47°		47°		49°		62°	
Standard hook	For 4 ton							
Hook mass	60kg							
Parts of line	1							

731-75104000

Boom angle (°)	Offset 5°		Offset 25°		Offset 45°		Offset 60°	
	Working radius (m)	Load (ton)	Working radius (m)	Load (ton)	Working radius (m)	Load (ton)	Working radius (m)	Load (ton)
83	6.0	2.00	9.8	1.90	12.2	1.20	13.3	0.90
80	8.4	2.00	12.0	1.81	14.1	1.20	15.1	0.90
75	12.6	2.00	15.6	1.58	17.5	1.13	18.2	0.88
71	15.7	2.00	18.4	1.45	20.0	1.09	20.6	0.87
69	17.1	1.89	19.7	1.38	21.2	1.07	21.7	0.86
65	19.7	1.57	22.2	1.19	23.6	1.02	23.7	0.86
63	21.0	1.43	23.4	1.10	24.7	0.97	24.7	0.86
61	22.3	1.30	24.5	1.03	25.7	0.91		
59	23.4	1.08	25.6	0.95	26.7	0.86		
58	24.0	0.97	26.1	0.86	27.2	0.82		
53	26.7	0.54	28.6	0.48	29.4	0.46		
51	27.7	0.40	29.4	0.36	30.2	0.34		
Critical boom angle	50°		50°		50°		62°	
Standard hook	For 4 ton							
Hook mass	60kg							
Parts of line	1							

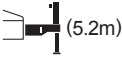
32.5m Boom + 14.0m SL Jib

Boom angle (°)	Offset 5°		Offset 25°		Offset 45°		Offset 60°	
	Working radius (m)	Load (ton)	Working radius (m)	Load (ton)	Working radius (m)	Load (ton)	Working radius (m)	Load (ton)
83	7.2	1.35	12.0	0.80	15.1	0.50	16.7	0.40
80	9.9	1.35	14.2	0.77	17.2	0.48	18.4	0.40
76	13.5	1.35	17.3	0.69	20.0	0.46	21.1	0.39
72	16.7	1.20	20.2	0.62	22.7	0.44	23.6	0.39
70	18.2	1.09	21.7	0.59	24.0	0.43	24.8	0.39
64	22.6	0.86	25.6	0.52	27.5	0.41	27.8	0.39
60	25.3	0.76	28.3	0.49	29.8	0.40		
54	29.2	0.64	31.7	0.46	32.7	0.40		
52	30.3	0.52	32.7	0.45	33.6	0.40		
51	30.8	0.46	33.1	0.42	34.0	0.40		
50	31.4	0.40	33.7	0.35	34.4	0.35		
49	31.9	0.34	34.1	0.31				
Critical boom angle	48°		48°		49°		63°	
Standard hook	For 4 ton							
Hook mass	60kg							
Parts of line	1							

731-75104000

Boom angle (°)	Offset 5°		Offset 25°		Offset 45°		Offset 60°	
	Working radius (m)	Load (ton)	Working radius (m)	Load (ton)	Working radius (m)	Load (ton)	Working radius (m)	Load (ton)
83	7.2	1.35	12.0	0.80	15.1	0.50	16.7	0.40
80	9.9	1.35	14.2	0.77	17.2	0.48	18.4	0.40
76	13.5	1.35	17.3	0.69	20.0	0.46	21.1	0.39
72	16.7	1.20	20.2	0.62	22.7	0.44	23.6	0.39
70	18.2	1.09	21.7	0.59	24.0	0.43	24.8	0.39
64	22.6	0.86	25.6	0.52	27.5	0.41	27.8	0.39
60	25.3	0.76	28.3	0.49	29.8	0.40		
57	27.2	0.70	30.0	0.48	31.3	0.40		
55	28.4	0.56	31.1	0.47	32.1	0.40		
54	29.0	0.48	31.7	0.40	32.6	0.40		
53	29.6	0.40	32.2	0.34	33.1	0.34		
Critical boom angle	52°		52°		52°		63°	
Standard hook	For 4 ton							
Hook mass	60kg							
Parts of line	1							

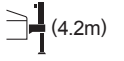
32.5m Boom+6.5m SL Jib



Outriggers intermediately extended (5.2m) over side

Boom angle (°)	Offset 7°		Offset 25°		Offset 45°		Offset 60°	
	Working radius (m)	Load (ton)	Working radius (m)	Load (ton)	Working radius (m)	Load (ton)	Working radius (m)	Load (ton)
83	5.4	3.20	7.7	3.20	9.2	2.20	9.8	1.60
81	6.8	3.20	8.8	3.20	10.3	2.20	10.8	1.60
76	10.6	3.20	12.2	2.64	13.5	2.07	14.0	1.60
70	14.6	2.52	16.0	2.02	17.0	1.74	17.5	1.58
67	16.3	1.86	17.8	1.62	18.7	1.54	19.1	1.47
63	18.5	1.20	19.9	1.06	20.7	1.02	20.9	1.01
61	19.6	0.93	20.9	0.84	21.7	0.80		
59	20.6	0.72	21.8	0.66	22.8	0.57		
Critical boom angle	58°		58°		58°		62°	
Standard hook	For 4 ton							
Hook mass	60kg							
Parts of line	1							

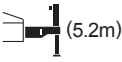
731-75103000



Outriggers intermediately extended (4.2m) over side

Boom angle (°)	Offset 7°		Offset 25°		Offset 45°		Offset 60°	
	Working radius (m)	Load (ton)	Working radius (m)	Load (ton)	Working radius (m)	Load (ton)	Working radius (m)	Load (ton)
83	5.4	3.20	7.7	3.20	9.2	2.20	9.8	1.60
81	6.8	3.20	8.8	3.20	10.3	2.20	10.8	1.60
76	10.6	3.20	12.2	2.64	13.5	2.07	14.0	1.60
73	12.4	2.47	14.0	2.09	15.3	1.85	15.7	1.59
72	13.0	2.20	14.6	1.87	15.9	1.66	16.3	1.58
70	14.1	1.78	15.7	1.52	17.0	1.34	17.4	1.30
67	15.8	1.22	17.4	1.03	18.8	0.85	18.8	0.85
Critical boom angle	66°		66°		66°		66°	
Standard hook	For 4 ton							
Hook mass	60kg							
Parts of line	1							


32.5m Boom+10.25m SL Jib



Outriggers intermediately extended (5.2m) over side

Boom angle (°)	Offset 5°		Offset 25°		Offset 45°		Offset 60°	
	Working radius (m)	Load (ton)	Working radius (m)	Load (ton)	Working radius (m)	Load (ton)	Working radius (m)	Load (ton)
83	6.0	2.00	9.8	1.90	12.2	1.20	13.3	0.90
80	8.4	2.00	12.0	1.81	14.1	1.20	15.1	0.90
75	12.6	2.00	15.6	1.58	17.5	1.13	18.2	0.88
71	15.7	2.00	18.4	1.45	20.0	1.09	20.6	0.87
69	17.1	1.87	19.7	1.38	21.2	1.06	21.7	0.86
67	18.3	1.52	21.0	1.23	22.4	1.04	22.7	0.86
66	18.9	1.37	21.5	1.12	23.0	1.03	23.2	0.86
64	20.1	1.09	22.7	0.88	24.0	0.84	24.3	0.84
60	22.4	0.65	24.8	0.52	25.8	0.52		
Critical boom angle	59°		59°		59°		63°	
Standard hook	For 4 ton							
Hook mass	60kg							
Parts of line	1							

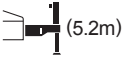
731-75104000



Outriggers intermediately extended (4.2m) over side

Boom angle (°)	Offset 5°		Offset 25°		Offset 45°		Offset 60°	
	Working radius (m)	Load (ton)	Working radius (m)	Load (ton)	Working radius (m)	Load (ton)	Working radius (m)	Load (ton)
83	6.0	2.00	9.8	1.90	12.2	1.20	13.3	0.90
80	8.4	2.00	12.0	1.81	14.1	1.20	15.1	0.90
75	12.6	2.00	15.6	1.58	17.5	1.13	18.2	0.88
73	14.2	1.98	17.1	1.50	18.8	1.11	19.4	0.87
71	15.3	1.63	18.2	1.26	20.0	1.09	20.6	0.87
68	17.0	1.16	19.9	0.87	21.8	0.73	22.2	0.73
Critical boom angle	67°		67°		67°		67°	
Standard hook	For 4 ton							
Hook mass	60kg							
Parts of line	1							

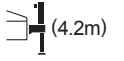
32.5m Boom+14.0m SL Jib



Outriggers intermediately extended (5.2m) over side

Boom angle (°)	Offset 5°		Offset 25°		Offset 45°		Offset 60°	
	Working radius (m)	Load (ton)	Working radius (m)	Load (ton)	Working radius (m)	Load (ton)	Working radius (m)	Load (ton)
83	7.2	1.35	12.0	0.80	15.1	0.50	16.7	0.40
80	9.9	1.35	14.2	0.77	17.2	0.48	18.4	0.40
76	13.5	1.35	17.3	0.69	20.0	0.46	21.1	0.39
72	16.7	1.20	20.2	0.62	22.7	0.44	23.6	0.39
70	18.2	1.09	21.7	0.59	24.0	0.43	24.8	0.39
64	22.5	0.86	25.6	0.52	27.5	0.41	27.8	0.39
61	24.3	0.59	27.6	0.45	29.3	0.40		
Critical boom angle	60°		60°		60°		63°	
Standard hook	For 4 ton							
Hook mass	60kg							
Parts of line	1							

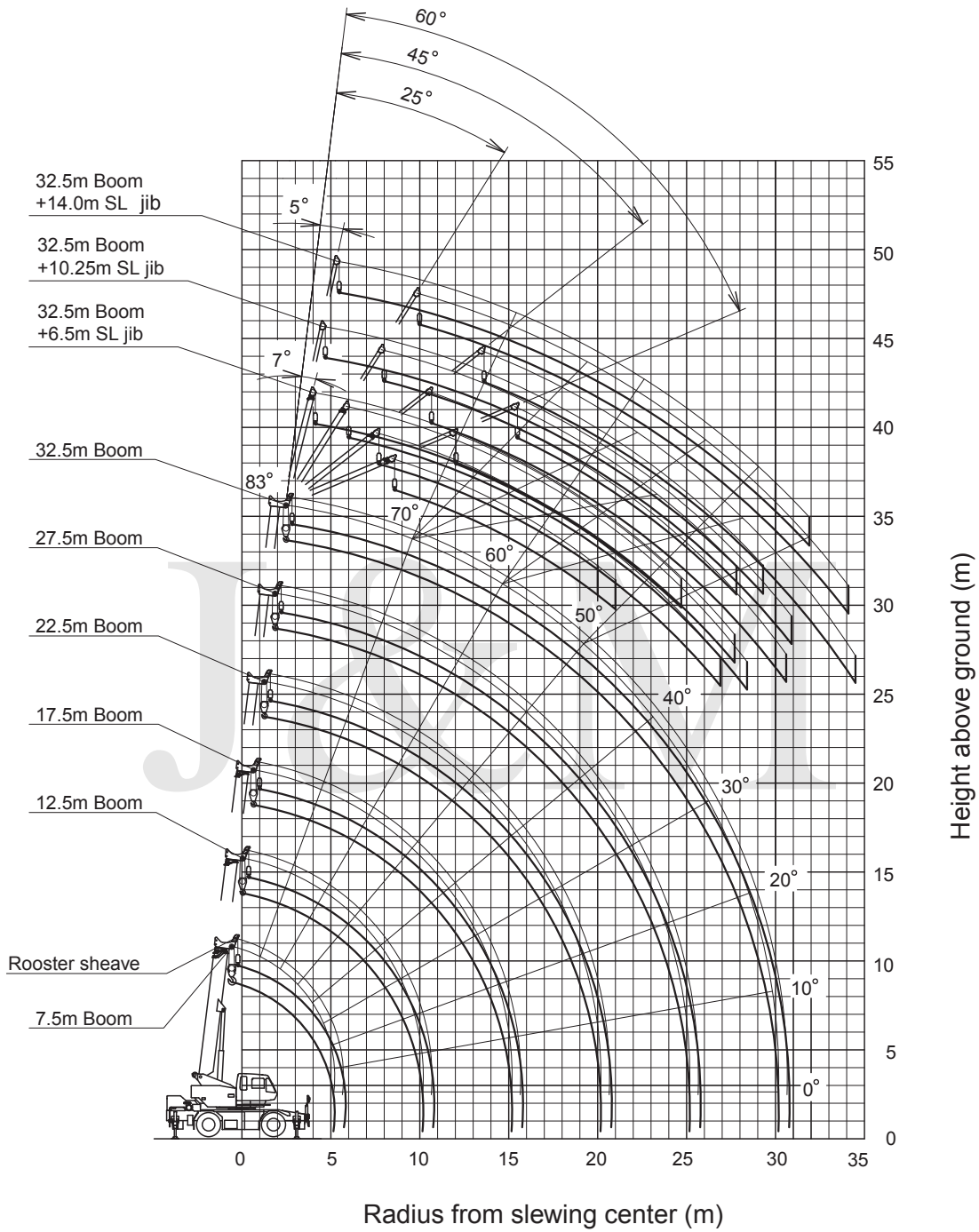
731-75104000



Outriggers intermediately extended (4.2m) over side

Boom angle (°)	Offset 5°		Offset 25°		Offset 45°		Offset 60°	
	Working radius (m)	Load (ton)	Working radius (m)	Load (ton)	Working radius (m)	Load (ton)	Working radius (m)	Load (ton)
83	7.2	1.35	12.0	0.80	15.1	0.50	16.7	0.40
80	9.9	1.35	14.2	0.77	17.2	0.48	18.4	0.40
76	13.5	1.35	17.3	0.69	20.0	0.46	21.1	0.39
72	16.7	1.20	20.2	0.62	22.7	0.44	23.6	0.39
69	18.9	0.96	22.3	0.58	24.5	0.43	25.3	0.39
Critical boom angle	68°		68°		68°		68°	
Standard hook	For 4 ton							
Hook mass	60kg							
Parts of line	1							

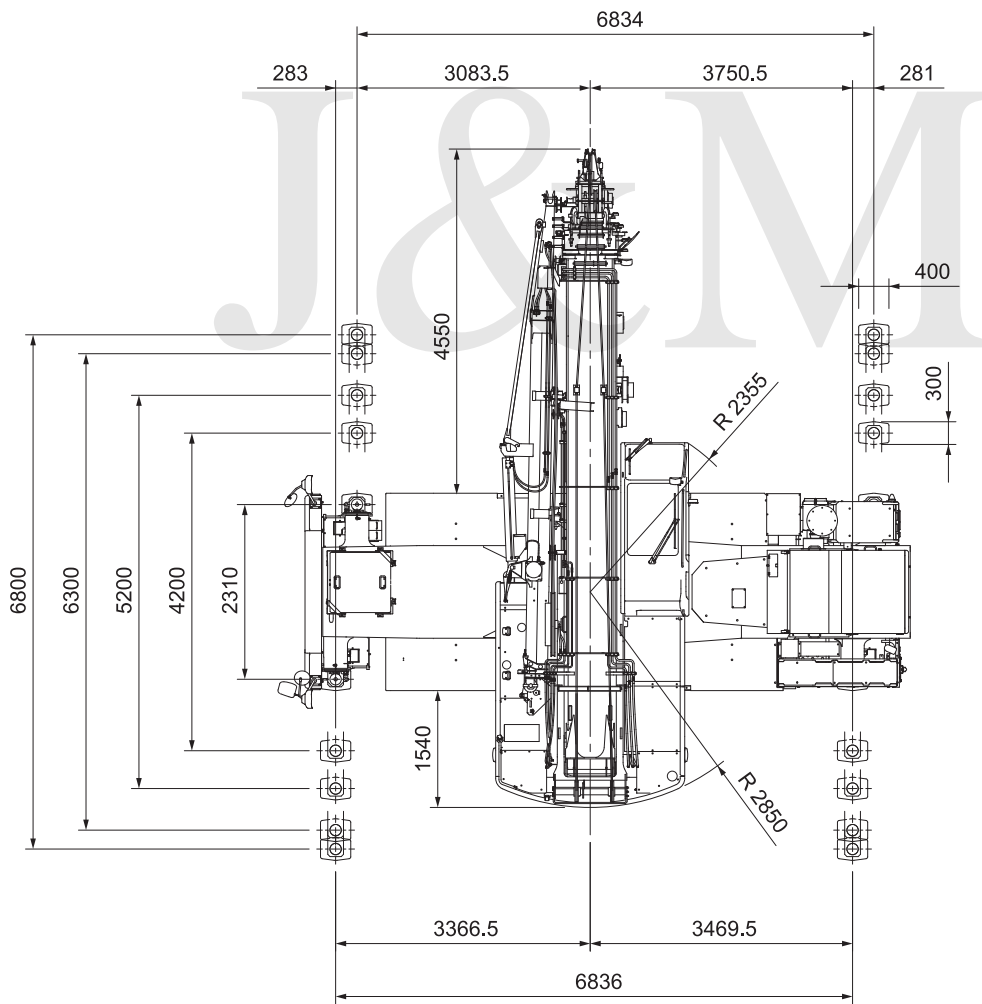
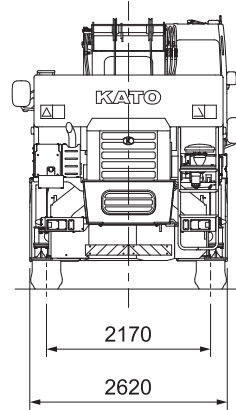
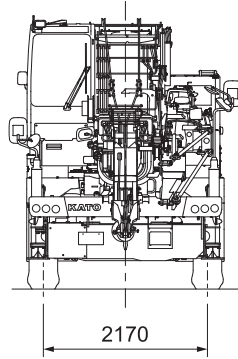
WORKING RANGE



Notes:

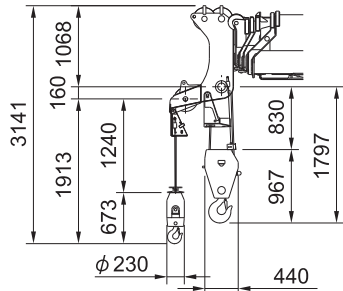
1. This diagram does not include deflection of Boom and Jib.
2. The outriggers are fully extended.

Overall view

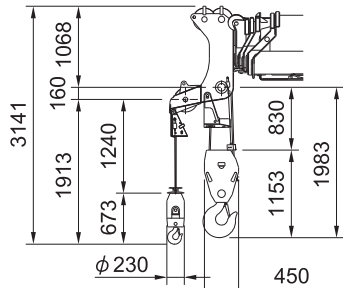
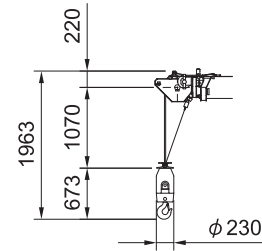


Reduced scale: 1/100 Unit (mm)

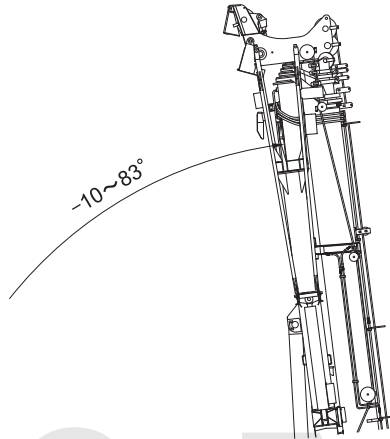
Overall view



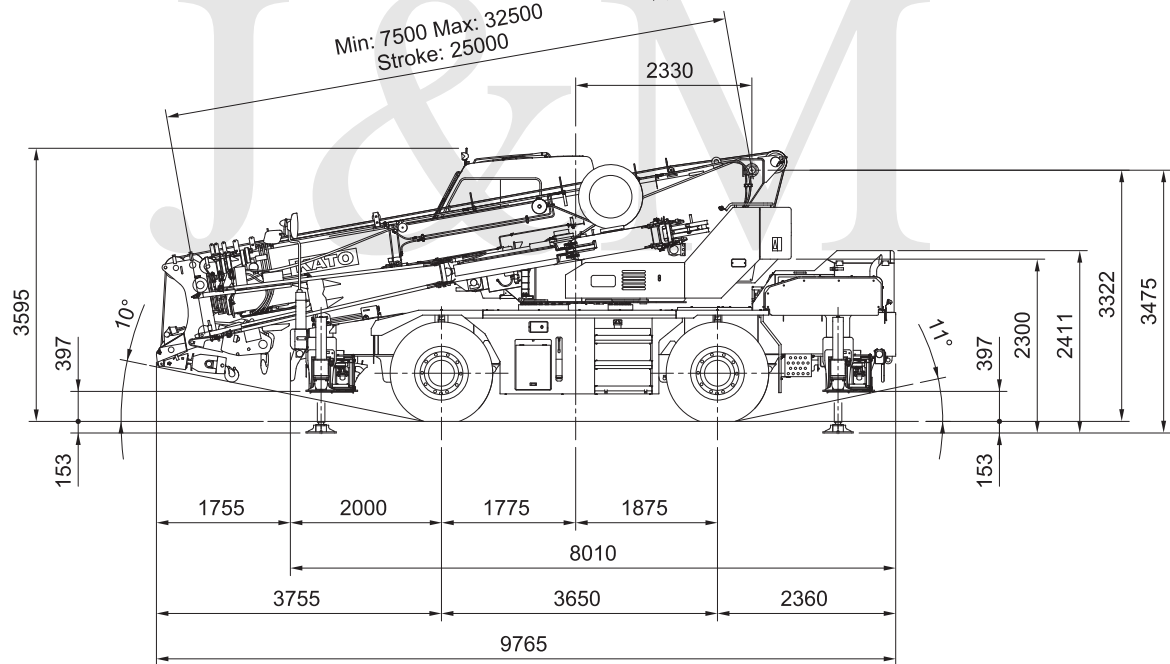
22ton hook



35ton hook



Min: 7500 Max: 32500
Stroke: 25000



Ramp break over angle: 25°

When the suspension is locked, the height shall be the overall height: - 40 mm.

(Suspension cylinder completely retracted)

Reduced scale: 1/100 Unit (mm)

* KATO products and specifications are subject to improvements and changes without notice.

Address inquiries to:

KATO

KATO WORKS CO.,LTD.

9-37, Higashi-ohi 1-chome, Shinagawa-ku, Tokyo, 140-0011, Japan

Tel. : Head Office Tokyo (03) 3458-1111
Overseas Marketing Department. Tokyo (03) 3458-1115

Fax. : Tokyo (03) 3458-1152

URL <http://www.kato-works.co.jp>

C04151

11.2015-1000 (TI) 1



We acquired the "ISO 9001" certification which is an international standard for quality assurance.